

Fundraising and the Lottery

2001 Workshop Proceedings
of the
Countryside Recreation Network

Edited by Emma Barratt and Liz Davies
Network Managers

Formatted by Christine Heywood
Network Assistant

Held at Cardiff University
11th April 2001

Published by CRN Countryside Recreation Network

© 2001 CRN Countryside Recreation Network

ISBN 1-902647-23-8

Copies cost £8 and are available from:

Countryside Recreation Network
Department of City and Regional Planning

Cardiff University

Glamorgan Building

King Edward VII Avenue

Cardiff, CF10 3WA

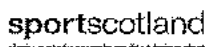
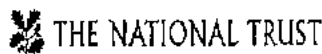
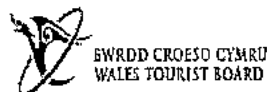
Tel: 029 2087 4970

Fax: 029 2087 4728

e-mail: crn@cardiff.ac.uk

web: www.CountrysideRecreation.org.uk

The following agencies fund CRN in order to promote good practice



Countryside Recreation Network

CRN is a network which:

- Covers the UK and the Republic of Ireland
- Gives easy access to information on countryside and related recreation matters
- Reaches organisations and individuals in the public, private and voluntary sectors
- Networks thousands of interested people

The Network helps the work of agencies and individuals in three areas:

Research:

to encourage co-operation between members in identifying and promoting the need for research related to countryside recreation, to encourage joint ventures in undertaking research, and to disseminate information about members' recreation programmes.

Liaison:

to promote information exchange relating to countryside recreation, and to foster general debate about relevant trends and issues.

Good Practice:

to spread information to develop best practice through training and professional development in provision for and management of countryside recreation.

Chair:

John Thomson, Scottish Natural Heritage

Vice-chair:

Eileen McKeever, Environment Agency

Countryside Recreation Network
 Dept. of City & Regional Planning
 Cardiff University
 Glamorgan Building,
 King Edward VII Avenue,
 Cardiff, CF10 3WA
 Tel: 029 20 874970
 Fax: 029 20 874728
 e-mail: crn@cardiff.ac.uk

Editors: Emma Barratt

Liz Davies

CONTENTS

PLENARY PAPERS

Welcome and Introduction	1
<i>Jennifer Stewart, Manager for Wales, Heritage Lottery Fund</i>	
The Impact of the Lottery on Countryside Recreation and Conservation	3
<i>Dr Kevin Bishop, Senior Lecturer, Cardiff University</i>	
Sport England Lottery Fund	11
<i>Paul Richardson, Senior Strategy and Statutory Services Manager Sport England Lottery Fund</i>	

WORKSHOPS

- New Opportunities Fund: Green Spaces and Sustainable Communities,
'Doorstep Greens'** 21
Pete Johnstone, National Project Officer, Countryside Agency 'Doorstep Greens'
- An Application to The Heritage Lottery Fund by the Yorkshire Dales
Millennium Trust** 25
Ian Oag, Director, Yorkshire Dales Millennium Trust
- Lottery Funding from the Point of View of a Successful Applicant
- Kennet & Avon Canal Restoration Project** 29
Michael Goodenough, Kennet and Avon Canal Waterway Manager, British Waterways
- The Community Fund (formerly known as The National Lottery Charities Board)** 34
Anna Orton, Policy Officer for Wales, National Lottery Charities Board
- Countryside Agency Local Heritage Initiative** 38
Chris Burke, Local Heritage Initiative Advisor, Countryside Agency
- Tips for Successful Applicants: Lottery Funding from the Point of View
of a Professional Fundraiser** 41
Nitin Thakrar, Consultant
- New Opportunities Fund 'Green Spaces and Sustainable Communities'
Programme** 47
Helen Earner, Policy Officer, New Opportunities Fund (Workshop Leader)
Fflur Lawton, Senior Information Officer, New Opportunities Fund, and
Elaine Reynolds, Out of School Hours Learning Co-ordinator, Mountain Ash
Comprehensive School

SUPPORTING PAPERS

Annex 1	51
The Impact of the National Lottery on Countryside Recreation and Conservation <i>Dr Kevin Bishop</i>	
Annex 2	54
Approved Countryside Agency Local Heritage Initiative Projects <i>Chris Burke</i>	
Annex 3	55
Lottery Distributor Contact Information <i>Compiled by Emma Bishop</i>	
Annex 4	59
Programme	
Annex 5	60
Speaker Biographies	
Annex 6	67
Delegate List	

FUNDRAISING AND THE LOTTERY

Jennifer Stewart

Manager for Wales, Heritage Lottery Fund

Background

The possibilities for funding countryside projects have changed not only with the inception of the National Lottery in 1994, but in more recent times, for example, with the creation of new Lottery distributing bodies such as the New Opportunities Fund (NOF) and with the introduction of new grant programmes specifically targeted at community groups, such as the Awards for All, Wales scheme, a new programme set up by the Community Fund (CF), the Heritage Lottery Fund (HLF) and NOF. These new initiatives, as well as the complexities of additionality, eligibility of European funding, and issues relating to access mean we have a much more complex lottery funding 'landscape' now than even ten years ago. Hopefully, this compilation of articles based on the talks given at this 'Fundraising and the Lottery' workshop will act as a compass to guide you through this potentially confusing landscape.

Most people are aware that the National Lottery was set up in 1994, however, this was not the first national lottery in Britain. That honour goes to the one begun in 1569, during the reign of Elizabeth I. While the purpose and beneficiaries of that first national lottery may not be clear, with our own National Lottery there are six main groups of beneficiaries, excluding the prize-winners. These groups or 'Good Causes' are; sport, arts, millennium, heritage, new opportunities (i.e. health, education and environment), and charities. For every pound spent on a lottery ticket or scratchcard, 28p goes to one of these 'Good Causes' according to a strict formula. A variety of appointed organisations - Lottery Distributor Bodies (LDBs) throughout the UK have been tasked by the government to distribute these award monies according to a defined policy and financial directions*. Since 1994, total Lottery ticket sales have amounted to over £30 billion, with over £10 billion now given to the 'Good Causes' throughout the UK.

Within the area of countryside recreation projects, the main LDBs are The Heritage Lottery Fund (HLF), The New Opportunities Fund (NOF), the Sports LDBs (the four sports councils in the UK), and the Community Fund (previously The National Lottery Charities Board). Although it is quite easy to find out how much has been spent by the different LDBs, in Wales for example HLF has awarded over £80 million to over 365 projects, it is not that easy

to ascertain how much money has been awarded to countryside recreation projects as these can be defined differently by LDBs. In addition, the impact, results and range of beneficiaries of an individual grant are much more diffuse than just a listing of the successful applicants. Measuring and evaluating the long term success of a lottery grant award in an area can often be a much more complicated exercise than merely adding up the total amount of lottery awards in that area. A key concern for LDBs now is how to ensure the sustainability of Lottery-funded projects, well after the warm glow of successful applications has faded away.

The proceedings of the workshop began with an overview to set the scene for Lottery funding and countryside recreation based on Dr Bishop's own research into this area. This was followed by introductions to some of the key Lottery funders in this area; HLF, Sport England and NOF including guidance and discussion on the application process, and lessons learned by successful applicants (HLF funded the Yorkshire Dales Millennium Trust, the Kennet & Avon Canal, and the Wildlife Trusts). The role of the award partners and fundraising from the perspective of a professional fundraiser are also covered.

The workshop was held in April during the dark days of Foot and Mouth Disease (FMD) and while these issues were not discussed in depth at the workshop, the ramifications of FMD had, and will continue to have, a huge impact on recreation in the countryside, in particular issues relating to access.

* See www.lotterygoodcauses.org.uk -- a gateway to all of the UK Lottery 'Good Causes'

THE IMPACT OF THE NATIONAL LOTTERY ON COUNTRYSIDE RECREATION AND CONSERVATION

Dr Kevin Bishop

Senior Lecturer, Cardiff University

Introduction

The National Lottery is an important source of rural funding: according to the Cabinet Office, in 1998-99 Lottery spending was the second largest source of funding for rural areas at £208m. This article provides a brief assessment of the impact of this funding on countryside conservation and recreation. The research upon which this article is based involved the development of a database of all application and award data kept by the Heritage Lottery Fund (HLF) and Millennium Commission and figures released by the Department of Culture, Media and Sport (DCMS) concerning awards made by the respective Sports and Arts Councils and National Lottery Charities Board (NLCB) for the period November 1994 to 31st December 1998. As well as allowing us to explore the quantitative impacts of the Lottery on the countryside, the database was used to select a series of Lottery funded countryside projects as case studies for more in-depth investigation.

Defining 'Countryside Conservation'

We make no apologies for beginning with a discussion of the scope of our research. If this is not clear, there are bound to be questions about the significance and value of the study. Deciding whether particular projects should be included in our analysis and then dividing them into specific types is complicated by the incidental nature of the benefits of some projects, the fact that some projects include suburban or semi-rural locations, and by the limitations of the source data.

Included within our definition of 'countryside conservation' are 'wildlife' or 'nature' conservation and 'landscape' or 'aesthetic' conservation; but also public access to, and enjoyment of these environmental assets. The selected projects therefore include those that incorporate one or more of the following components:

- land acquisition to safeguard flora and fauna, cultural landscapes and scenic areas;
- habitat or landscape restoration or creation;
- education about and interpretation of nature and landscape and/or the means to help the public have access to, and enjoyment of, them;

- surveying and site assessment;
- demonstration programmes to spread good practice; and
- staff and volunteer training to enhance the skills needed to protect the countryside heritage.

Thus the term 'countryside conservation' embraces a wide range of projects and programmes funded through the Lottery.

In classifying countryside conservation projects into categories for our analysis we encountered a number of issues including:

- Should we include projects where the countryside conservation benefits are incidental?
- Should environmental projects (such as the ex-situ conservation of UK biodiversity) be included?
- What is countryside (many projects cover both town and country)?

In answering such questions, we have had to be pragmatic and arrived at rather subjective conclusions. For example, the analysis excluded consideration of city farms, projects involving Groundwork Trusts located in urban areas, urban parks and arboreta, but included parks and Millennium Greens located in the countryside and urban fringe. Our definition of countryside conservation included the protection of broad countryside landscape areas, and the preservation of historic designed landscapes, but excluded the restoration of gardens, and of urban parks. Also excluded were the preservation of conspicuous built features in the countryside such as churches, follies or windmills.

In order to reflect better the wide range of countryside conservation projects funded by the Lottery, a distinction was drawn between 'primary' and 'secondary' countryside conservation projects, which were then sub-divided into a number of project types:

- *Primary countryside conservation* includes projects involving the restoration or conservation of countryside habitats and wildlife, the improvement of public access to the countryside, and training, education and research.

- *Secondary countryside conservation* projects include those concerned with the conservation of inland waterways, collections of biotic material relating to UK biodiversity, historic parks, archaeological and historic landscapes, and the construction or enhancement of conservation centres and open spaces linking town and country.

The Impacts of the Lottery on the Countryside

The Lottery has provided significant additional finance for countryside conservation. During its first four years, from November 1994 to 31st December 1998, the Lottery Distributing Bodies (LDBs) awarded £364 million for 429 countryside conservation projects. This equates roughly to the combined grant-in-aid to the government conservation agencies for this period.ⁱ It represents an average of nearly £15.00 per hectare of land in the UK or just over £6.00 per person for the whole of the UK.ⁱⁱ

The £364 million is made up of £154 million for projects whose primary purpose was countryside conservation and £210 million for projects with secondary benefits for countryside conservation (see above). Funding for countryside conservation (both primary and secondary) represents 7% of the £5.5 billion awarded by the LDBs to all good causes over the same period. As Table 1 (Annex 1) indicates, a broad range of countryside conservation work has been funded through the Lottery.

The Millennium Commission and Heritage Lottery Fund (HLF) have been the principal funders of countryside conservation projects amongst the LDBs. The Millennium Commission has awarded grants totalling £211 million (58% of the total Lottery funding for countryside conservation) whilst the HLF has awarded grants totalling £148 million (41%). The other LDBs (the National Lottery Charities Board, respective Arts Councils and Sports Councils) have provided some finance for countryside conservation (a combined total of £4.9 million).ⁱⁱⁱ

These headline figures for total funding for countryside conservation hide some important distinctions between the practice of the two main funders. Millennium Commission funding was focused on large-scale 'landmark' projects, such as the award of £14.5 million for the creation of a coastal park along 22 km of South Wales' coastline, incorporating community forests, woodland, major open spaces and redevelopment areas. Millennium Commission awards larger than £1 million account for four in five of the number, and 98% of the total

value, of awards for countryside conservation.^{iv} In comparison, the HLF has tended to fund more small-scale projects: 45% of total value and 96% of the total number of HLF awards for countryside conservation have been for amounts less than £1 million.

Application success rates for countryside conservation projects have generally been higher than for other good causes. For the Millennium Commission, 17% of applications for countryside conservation were successful, which compares with a 6% success rate for other capital projects. For the HLF, 81% of applications for countryside conservation were successful, which compares with a 52% success rate for other heritage sectors. There are a number of potential reasons for this relatively high success rate but we believe that it represents a number of factors including: low number of total applications from the countryside sector and associated lack of competition within this sector for Lottery funding.

Additionality

When the Lottery was established, the Government gave a commitment that the funds distributed through the LDBs would be additional to government funding.^v In recent years, this issue has received renewed attention with the funding of health and education programmes by the New Opportunities Fund (NOF) (which some would argue should be supported entirely from tax revenue) (Goodwin, 1998) and the use of NOF as a funding source for the Prime Minister's recently announced initiatives on the environment (Blair, 2000).^{vi} It is very difficult to calculate whether Lottery funding has in fact been 100% additional to traditional sources of funding for countryside conservation, since there has never been any comprehensive study into its funding base. However, in broad terms, our research shows that the advent of the Lottery has coincided with a period during which government funding of countryside conservation, as measured through the funds made available to the countryside conservation agencies, has remained generally static (see Figure 1, Annex 1).

The 'Lottery Winners' - Organisations

The distribution of Lottery awards has varied greatly between sectors, with non-governmental organisations (NGOs) receiving two thirds of the Lottery funding for countryside conservation. By far the most important recipient of Lottery awards for primary countryside conservation were the Wildlife Trusts, who secured 160 grants totalling £35.8 million by 31st December 1998. Of this, £33.9 million was through 147 grants from the HLF. As a whole, local authorities had collectively been awarded £38.4 million through 36 grants for primary

countryside conservation projects. Other conservation bodies that have been awarded relatively high levels of Lottery funding for primary countryside conservation include the Woodland Trust, the National Trust for Scotland, the RSPB and the National Trust. As of 31st December 1998, British Waterways was the largest single recipient of Lottery awards for secondary countryside conservation by value, having been awarded £57.2 million through two grants. Also successful were trusts set up expressly to apply to the Lottery (for example the Millennium Forest for Scotland Trust). By 31st December 1998, such trusts had been awarded £49 million from the Millennium Commission.

In comparison with NGOs and local authorities, the government agencies involved in countryside conservation have collectively not received a high level of Lottery funding. By 31st December 1998, the value of Lottery awards made to the agencies for countryside conservation, much of which is being 'routed through' to other recipients, totalled £30 million. This is less than the HLF's funding of the Wildlife Trusts and represents a fairly small proportion (8%) of the value of Lottery awards for countryside conservation.

However, there is significant variation in government agency involvement with the Lottery. The Countryside Agency (formerly the Countryside Commission) and English Nature are the only government agencies to have secured Lottery funding for several large-scale projects. The most important of these are: the Millennium Greens programme, (lead by the Countryside Agency and supported by the Millennium Commission), to create new greens for the 21st century; Tomorrow's Heathland Heritage (English Nature/HLF) which aims to restore areas of heathland in Britain; and the Local Heritage Initiative (Countryside Agency/HLF) which offers smaller grants to community-led heritage schemes in England. While English Nature and the Countryside Agency have attracted grants worth £27.9 million (98% of the funds awarded to countryside agencies by the HLF and the Millennium Commission). The Countryside Council for Wales and Scottish Natural Heritage have secured Lottery funding worth £0.6 million.

The 'Lottery Winners' - Areas

The distribution of Lottery funding for countryside conservation varies significantly between countries and regions. Lottery funding for primary and secondary countryside conservation has been distributed unevenly between UK countries, if measured on a *per capita* or *per ha* basis (see Figures 2 and 3, Annex 1). England and Northern Ireland have received lower

levels of funding for countryside conservation *per capita* than other parts of the UK (see Figure 2). Northern Ireland has been awarded significantly less for countryside conservation *per hectare* than other UK countries (see Figure 3, Annex 1). This distribution is largely due to the Millennium Commission's distribution of finance for large-scale eco-restoration projects and conservation centres. The regional distribution of Lottery funding in England is very uneven, with the North East, North West and the South East receiving markedly less finance *per capita* than other regions. Such analysis must be treated with some caution as it is not related to 'heritage need', however calculated.

The Lottery Landscape of 2020

The funding of countryside conservation has shifted in extent and direction since the advent of the Lottery. The LDBs have emerged as new and significant funding agencies for the land and countryside.^{vi} The Lottery money channelled to countryside projects has enabled conservation bodies to expand the scale of work with benefits to biodiversity and landscape conservation, and more public access.

The Lottery funded countryside of 2020 will be one with more woodland, new areas of 'created' countryside, improved opportunities for public access, enjoyment and understanding and more land owned by countryside conservation bodies. Nearly 60% of the Millennium Commission's funding for countryside conservation has gone to woodland creation schemes such as the Millennium Forest for Scotland. HLF has funded a series of ambitious ecological restoration schemes aimed at re-creating lost landscapes (e.g. RSPB's creation of wetland fen from intensive arable land in East Anglia). The need to assure public benefit has meant that the LDBs have often required public access and interpretation of the conservation measures they are funding. Lottery funding has been a powerful 'glue' to link different aspects of countryside conservation: access with conservation; the natural environment with the built environment; the visual with the scientific; and, access with understanding. The Lottery is also increasing the amount of land owned by conservation bodies: grants from the HLF have helped such bodies acquire over 200 sites covering 50,000 ha.

Beyond the Figures

The influence of the Lottery goes beyond a physical impact on the countryside and its conservation value. Lottery funding is altering the relationship between different bodies in the countryside sector and impacting on countryside policy.

The advent of the Lottery has established a new policy and practice framework for countryside conservation. In particular, it has introduced the Lottery Distributing Bodies as new actors. The LDBs have developed beyond mere funders. Over time, the LDBs and the HLF in particular, have established a policy competence of their own through the appointment of specialist advisors, expert panels and their own staff. Initially the policy role of the LDBs was implicit through individual grant decisions and advice, but more recently the government requirement that they develop distribution strategies has made their policy role explicit.

The government conservation agencies have responded to the opportunities of the Lottery in very different ways. The advent of the Lottery has significantly altered the roles of English Nature and the Countryside Agency in particular. Both of these agencies, unlike their sister organisations in Northern Ireland, Scotland and Wales, established dedicated Lottery Units at an early stage of the Lottery's development. The aim of these Units was to both influence and advise the LDBs on individual grant decisions and to facilitate the development of applications from the agencies for funding related to their own work programmes. Increasingly, conservation agencies are no longer just grant givers but also grant bidders. This new role can put them in competition with some of their partners in countryside sector (notably conservation NGOs and local authorities).

The Lottery has enhanced and promoted the role of the NGOs as providers of countryside conservation and enjoyment opportunities. The LDBs now route over 60% of their support for countryside work through NGOs. This has both increased the status of some groups (notably the Wildlife Trusts) and encouraged partnerships and a co-operative style of working. It has done this by funding existing partnerships (e.g. the Tweed Forum) and encouraging the development of new partnerships (e.g. the Yorkshire Dales Millennium Trust).

Conclusions

The Lottery has accelerated the amount of conservation and access work, bringing significantly more land into conservation management and opening it up to public access and enjoyment. However, the impact of Lottery funding goes beyond this, it has impacted upon the systems that support countryside conservation and recreation, with qualitative results in terms of what takes place, where, how and by whom.

The picture of impacts painted above is but a snapshot of the early years of the development of the National Lottery and much will change when the new policy directions and devolved structures introduced under the Labour Government work their way through to completed projects. Nevertheless, despite the sums of money flowing to it the countryside sector has yet to maximise the potential benefits of Lottery funding (Gay, 2000). It needs to become more co-ordinated in its contacts with the LDBs and ensure that, where possible, it speaks with a united voice in order to maximise its influence. Such action is important if the 'countryside sector' is to position itself competitively with other calls upon Lottery funding and thus ensure it remains an identifiable and worthwhile 'good cause' that can compete effectively with other sectors such as museums and sport.

Acknowledgements:

The research upon which this article is based was made possible by a grant from the Economic and Social Research Council. We are also grateful for to the Heritage Lottery Fund and Millennium Commission who granted us access to their records.

This paper was first published in *Countryside Recreation* Volume 8(4).

Footnotes

ⁱ The combined grant-in-aid to the government agencies involved with countryside conservation for the three financial years from 1995/96 to 1997/98 was £373 million.

ⁱⁱ The land area of the UK is 24.419 million hectares (Government Statistical Service, 1998). The population of the UK is 59.009 million (ONS, 1998).

ⁱⁱⁱ NOF's *Green Spaces and Sustainable Communities Programme* may also benefit countryside nature and landscapes when it is up and running.

^{iv} These statistics hide the distribution of smaller grants through the Millennium Greens programme, which is counted as one award with a value of £10 million. Yet, the programme has involved the distribution of smaller grants for the creation of 250 green spaces in England, averaging between 2 and 4 hectares, located in towns, villages and cities.

^v Brooke, P. (1994) *National Lottery: Section 26 Directions*. Policy Directions issued to the National Heritage Memorial Fund, 20 June.

^{vi} Goodwin, S. (1998) 'The big gamble that has brought riches beyond expectations,' in *The Independent Our Outdoor Heritage* section, 4 March, p4.

^{vii} Department of Culture, Media and Sport (1999) *First Report: The HLF*. The Stationary Office: London

SPORT ENGLAND LOTTERY FUND

Paul Richardson

Senior Strategy and Statutory Services Manager, Sport England Lottery Fund

Sport England Lottery Fund

The Sport England Lottery Fund was created as a result of the original National Lottery Act that was passed in October 1993. The first awards were made in March 1995.

About two-thirds of the money received (Sport England's share is nearly four pence of every pound) goes to the Community Projects fund. Applicants can apply to this fund for up to 65% of the cost of capital projects, although 50% is seen as a more realistic figure. However, there are two other initiatives incorporated into this fund that allow for an increased level of funding. The Priority Areas Initiative (PAI), for projects from deprived areas, allows applicants to apply for funding of up to 90% of the project cost.

Sport England is also part of the 'Awards for All' programme, run by the National Lottery Charities Board, which caters for applications of under £5,000.

Lottery Overview

In five years, there have been 7,369 applications to the Sport England Lottery Fund. A total of £3.95 billion has been requested towards total project costs of £6 billion. From these applications, 3,164 awards have been made with a total value of £1.11 billion, contributing to a total project cost of £2.07 billion. The average award has been for £350,000. However, this figure is distorted by a small number of very large awards, e.g. £120 million was awarded to the new Wembley Stadium project. The median award is for about £46,000.

Sport England Lottery Strategy

In May 1999, the Sport England Lottery Strategy '*Investing in our Sporting Future*' was published and it maps out the next ten years of lottery funding to sport.

Firstly, the application process was changed. Prior to publishing the new strategy, Sport England consulted previous applicants, both successful and unsuccessful, about their views on the application process. It was seen by many to be too slow, too bureaucratic and too centralised. Consequently, a new, two-stage application process was developed. As part of

the new process, Sport England has pledged to speed up the assessment time to no more than sixteen weeks.

Besides the new application process, the strategy sets out a number of pledges and targets for capital funding. The 1998 Lottery Act allowed Sport England to solicit applications for the first time, and targets have been set which aim to make sure that lottery funding, both Community Capital and Awards for All, goes to those areas and people most in need. Indeed, fifty percent of the investment in community projects will go to the areas of greatest need. Furthermore, specific targets are set out in terms of the number of projects aimed at our target groups, i.e. young people, disabled people, ethnic minorities and women and girls. There is a commitment to rural areas, with 500 awards to be made to village or community halls over the next ten years.

Alongside these targets for capital funding, there are new Community Revenue programmes: Sport Action Zones, School Sport Co-ordinators and the Active Communities Development Fund. All programmes are aimed at tackling social exclusion.

Funding for Countryside Activities

Countryside activities are those sporting or recreation activities that take place primarily in or on natural resources in the countryside or in urban areas. They offer people a chance to enjoy their leisure time and are a positive and legitimate use of the countryside. They include land, air and water sports, such as angling, caving, cycling, equestrian pastimes, motor sports, rambling, sailing and gliding, and can be competitive or non-competitive.

Existing Policy

Sport England has responsibility for working with those National Governing Bodies that are responsible for countryside sports or physical recreation. Other organisations with responsibility for countryside recreation include the Countryside Agency, the Environment Agency and British Waterways.

Sport England supports the view that everyone, regardless of ability, should have access to a range of natural resource activities. However, the countryside is under increasing pressure and this has an impact on how we use it for recreation. Therefore, Sport England also

supports natural resources activities that take place in towns or cities, for example, on old railway routes, canals or disused docklands.

Despite the pressures on the countryside, Sport England believes there is scope for increasing the number of people taking part in activities there, while remaining in harmony with other users. The activities must be carried out with respect for the natural environment and consequently, Sport England will encourage applicants to embrace sustainable promotion and to develop codes of good practice. Demand needs to be identified and then met through appropriate land use planning and effective management of the natural resources.

Priority

In its Lottery Strategy, Sport England identified a number of priorities for funding, e.g. young people, those with exceptional talent and those from deprived areas. Lottery applications from projects that meet Sport England's priorities have a greater chance of success. Outlined below is the framework for the assessment of projects:

Sports Development/Marketing Plan

All applications must demonstrate how their project will increase, or safeguard, the number of people taking part in sport and recreation. Applicants must submit a management plan that contains sports development and/or marketing proposals. It must cater for all standards of performance and show how participants can improve their standards. It must also demonstrate how the project will cover all sections of the community particularly those with historically low levels of participation, such as people with disabilities, women and people from ethnic minorities. The applicant must also carefully weigh up the effect of an increase in participation on the environment.

Sport England recognizes that sports development and marketing plans will vary between projects and, therefore, advises applicants to discuss the compilation of their plans with the relevant local authority and Sport England regional office.

Strategic Need

A proposed project can have strategic benefit for a variety of organisations, such as the local authority, the National Governing Body or the applicant. The project should relate to a

relevant strategy (local, county or national), be it for a local authority, a Community Forest or an Area of Outstanding Natural Beauty.

For example, if a project is for the construction of a multi-use route (for cycling, horse riding and walking) then it must be strategically relevant to the local authorities within which the route falls. An application requesting funding for the provision of a facility such as a dedicated cycle route would be given a higher priority than one for a route that consists of roads linked together by signs and maps. Multi-use routes are also preferred.

Routes that link to the Sustrans National Cycle Network (part-funded by the Millennium Commission) and the creation of 'Greenways' are also eligible for funding. The Greenways Challenge is an initiative set up by the Countryside Agency which encourages local authorities to set up a network of largely off-road routes so that people can walk or cycle to work or school.

Value for Money

Like all Lottery projects, natural resource-based applications must demonstrate that the amount of funding requested reflects its proposed sporting benefits.

Financial Need

Lottery money is used to fund the shortfall costs of a project and any application must demonstrate that it has exhausted all other sources of funding, that is, that Lottery money is essential for the project to be completed.

Low Priority Project Types

Taking the above information and details into account, the examples below show projects that would be considered as low priority:

- A 100 metre footpath through a forest.
- A short footpath linking a housing estate to the local shops.
- A short riverside cycle track.
- Stand-alone support facilities or projects concerned solely with social provision.

However, an application can include a low priority element as long as it forms a minor part of the overall project.

Eligibility

Eligible sports

There are over 100 sports that are recognised by Sport England, of which 25% rely on access to natural resources.

For projects involving countryside and water sports where safety is of paramount importance, applicants must be affiliated to the relevant National Governing Body, e.g. the British Mountaineering Council, Royal Yachting Association or British Canoe Union. It is also advisable for applicants for projects involving other sports to contact their relevant governing body, even if they are not affiliated.

Health and safety policies must also be robust and it is strongly recommended that all instructors and coaches have governing body-recognised qualifications. The Adventure Activities Licensing Regulations may be relevant for the principal sport, particularly if the project is for people under the age of 18. The regulations do not cover sailing in boats, which comes under the Merchant Shipping Act. Applicants are also advised to contact their local authority environmental health department for applications involving equestrian activities.

Partnership Funding

Applicants must contribute a certain amount of partnership funding towards the total cost of a project. Unless they qualify under the Priority Areas Initiative (see above), they realistically need to provide about half of the total cost. Contributions from statutory bodies with a responsibility for the countryside or from local authorities are encouraged because Sport England is keen to promote a partnership approach.

'In kind' support through, for example, land donations from a genuine third party, is not accepted as partnership funding, but it is considered to add additional value to a project. Similarly, contributions from those whose job it is to coordinate the project cannot be counted.

However, Sport England can consider funding project management costs where the managerial posts are established purely for the coordination of that project. These costs also must be for the capital development phase, not the long-term running of the project.

Applicants can include feasibility studies and professional costs in the total project cost, but these will only be funded if the applicant is successful.

Partnership funding for the sports element of the project cannot be sought from other Lottery distributors. However, some elements of a countryside project may be eligible for consideration by other Lottery distributors. If this is the case, an application can be made to another distributor for that separate element. An example would be the restructuring and improvement of an ancient stone wall (Heritage Lottery Fund) along a bridleway that needs upgrading (Sport England Lottery Fund). Further details on eligibility can be obtained from the relevant distributors.

Examples of Eligible Projects

Natural resource projects that Sport England has funded to date include cycle networks, footpaths, bridleways, climbing centres, water sports facilities, outdoor activity centres, support facilities (such as slipways, mooring points and storage provision), purchase of fishing rights, golf courses and major items of non-personal equipment.

When making an application for a natural resource-based project, an organisation must take into account the following issues:

Upgrading versus Maintenance

Sport England will consider applications for genuine upgrading, for example, improving the surface of a footpath for wheelchair users or providing additional changing rooms for water sports. Sport England will not fund a project resulting from previous poor maintenance, for example, restoring a footpath to its natural condition or replacing old signs on a bridleway.

Achieving Consensus

An applicant must make provisions for all sports and users of the land upon which the project is based. For example, if the application is for the upgrading of a canal towpath to create a new cycle and walking route, the applicant must take into account the effects on local anglers who use the canal. Sport England will not support a project in which improvements to one sport are made at the expense of another, unless everyone involved has reached an agreement.

Environmental Impact

The effect of a project on the surrounding environment must be taken into account during the planning of the project. Applications for larger projects (£250,000 and above) are required to consult the relevant local bodies (for example, the Countryside Agency, the Environment Agency and the local authority planning department). The Countryside Agency's Working Paper on appraising countryside recreation projects, 'Guidelines for Countryside Recreation Project Appraisal', is also useful. The response of those consulted should be sent directly to Sport England using the standard consultation form available in the application pack. It is the applicant's responsibility to send the consultation forms to the relevant bodies.

In some cases, the applicant will need to consider the sports proposals as part of a larger package of developments, for example, conservation issues. Sport England welcomes such a 'whole site' management approach, but will not usually be able to support the costs of any conservation works. The only exception may be where the works are required as a condition of planning permission. Here, the cost of the mitigation work will be considered within the value for money assessment of the project, in a similar way to landscaping works.

Certain developments are legally required to be subject to Environmental Impact Assessments before planning permission is granted. Sport England will consider the costs of such studies as an element of a project's professional costs.

Phasing and the Length of the Project

Sport England will accept applications for phased projects as long as the project and its phases have identifiable beginnings and ends. Thus, each phase must not depend on the previous phase in order to be operational. Funding requests for each phase must be made in separate Sport England Lottery Fund applications and, therefore, the required partnership funding must be found for each submitted application.

As with all projects, we expect natural resource-based projects to establish monitoring systems to gauge success, usage and value for money. In some cases, we request that such monitoring systems last for up to ten years, especially where the project is phased.

Technical Guidance

All applicants must meet the minimum guidelines set out in the Sport England Technical Guidance Notes. Applicants must be aware that the surface for a cycle route, for example, is just as important as the required size of a changing room. Where the Guidance Notes do not provide adequate recommendations, applicants should refer to documents published by relevant organisations.

Project Location

Applications requesting funding for a facility that falls outside the catchment area of the applicant organisation are still eligible for consideration. For example, a mountaineering club based in Leicester may request funding for a climbing hut in the Peak District. Another example is where the applicant organisation is based in an urban area but its activities take place in the countryside.

Security of Tenure

The applicant must provide evidence of security of tenure for its project. For example, if an organisation is applying for funds to upgrade fishing platforms on a river, then there must be guaranteed access to the entire site for the entire period of the award (up to 21 years). Likewise, support for facilities such as sailing clubhouses will only be considered if there is legal or customary access to the water space.

Public Rights of Way

Sport England will consider supporting applications that aim to improve or extend the long-term accessibility of the countryside. To this end, Sport England will consider funding non-statutory work on rights of way or assist in the creation of new rights of way. Applications for funding towards licences (for example, for angling or canoeing) may also be eligible as long as they secure public access, management, maintenance and publicity arrangements and there are no unreasonable restrictions.

We have to be assured that the route will be secure and available for a minimum period of time (this is usually related to the amount of grant). Making a route secure can be done in a number of ways. Public rights of way, as recorded on the 'Definitive Map and Statement', give guaranteed access for the public. Routes not recorded on the 'Definitive Map and

Statement' must be supported by additional, enforceable agreements with the leaseholders or freeholders for the whole route.

Priority Areas Initiative

The Sport England Lottery Fund also addresses the need for rural development under the Priority Areas Initiative (PAI). Projects that serve populations based in Rural Development Areas can be considered under the PAI. If applicants can satisfy the additional PAI criteria, they are eligible to apply for up to 90% of the total project cost.

Organisation Type

Private companies

Sports and activities such as equestrian pastimes, water skiing and golf are often led by the private sector. Lottery funding cannot be used for private gain, so applications from individuals or sole traders are ineligible. Other private sector organisations must demonstrate that they will not make a commercial gain as a result of receiving a Lottery grant. Companies limited by guarantee are usually eligible because they do not issue share capital and are constituted as non-profit-distributing bodies.

Non-departmental public bodies (N.D.P.B.s)

N.D.P.B.s are autonomous public sector organisations, accountable to Parliament and funded by Government. They are eligible to apply for Lottery funding, but they must demonstrate that any funding is for a project that is additional to their ordinary existing public expenditure programmes.

Sport England will consider applications from eligible organisations involved in a partnership with relevant local authorities, or from an N.D.P.B. in association with voluntary organisations, as long as there is a contract between them and the roles and responsibilities of each partner are clearly defined.

Examples of Countryside Projects

The following are examples of countryside projects that have been funded by the Sport England Lottery Fund:

- *Colne Valley Groundwork Trust Ltd* - awarded £61,177 towards a total project cost of £105,177 for the construction of an 11 kilometre cycle route from Rickmansworth to Uxbridge through the Colne Valley Regional Park.
- *Mallory Park Fisheries* - awarded £70,057 towards a total project cost of £113,809 for the construction of three fishing lakes with facilities for the disabled.
- *Countryside Commission* - awarded £1,841,876 towards a total project cost of £3,683,752 for the construction of the Pennine Bridleway from Middleton Top in Derbyshire to Long Preston in North Yorkshire.
- *Bath Canoe Club* - awarded £66,446 towards a total project cost of £102,224 for the refurbishment of its changing rooms, showers and toilet, the improvement of access to the river and the purchase of new canoes.
- *Wolds Gliding Club Ltd* - awarded £77,272 towards a total project cost of £134,427 for the purchase of two modern, two-seat training gliders and one high performance single-seat glider.

Conclusion

In its five years, the Sport England Lottery Fund has provided levels of funding for sports facilities that were not previously possible. Indeed, the amount of lottery funding awarded to sports facilities since March 1995 is equivalent to sixty years of exchequer funding for sports facilities. However, the changes initiated by the new Lottery Strategy will ensure that lottery funding reaches those areas most in need and provide everyone with access to sporting facilities.

WORKSHOP PAPER
NEW OPPORTUNITIES FUND: GREENSPACES AND SUSTAINABLE
COMMUNITIES - 'DOORSTEP GREENS'

Peter Johnstone

National Project Officer, Countryside Agency 'Doorstep Greens' Initiative

The Value of Green Space

Local green space is important to people for recreation, for health and their wellbeing. Surveys have repeatedly shown that people value local countryside and local open space. However, green space is not always available to everyone. There has been a significant loss in recent times of man made and natural open space. In some towns and cities the increasing costs to manage public parks and open spaces have led to their decline and public insecurity about visiting them. Green spaces in and around housing developments are often barren wastes lacking any feeling of local ownership or care. There is, however, a growing desire to foster a renewed sense of community in run down areas as well as a desire to reduce the need for recreational travel.

The need for accessible green space is often as acute in rural areas as in urban areas. Intensive farming often restricts access to the countryside and in many villages available green space is under pressure for development.

Recently, there has been a renaissance of interest in parks and local green space and a growing recognition of the vital part they play in sustaining healthy communities.

The Doorstep Greens Initiative

Doorstep Greens will operate under the New Opportunities Fund's 'Green Spaces and Sustainable Communities' programme. It will help 200 communities in cities, towns and villages to create or restore their own local, multi-use open space. The programme will be targeted particularly at areas and communities suffering from disadvantage, including a lack of access to open space close to where they live. The total cost of Doorstep Greens will be £20 million. The New Opportunities Fund has awarded the Countryside Agency £12.89 million and the remaining costs will be met by the Countryside Agency, national sponsorship, and local partnership funding.

The Aims and Objectives of Doorstep Greens

The concept behind Doorstep Greens is to improve access to and use of local green space, especially in socially and economically disadvantaged areas, and to help in the creation of sustainable communities.

Our five objectives for Doorstep Greens are to:

- enable 200 communities in urban and rural England to plan, design, create and manage their own multi-purpose green spaces by the end of 2006;
- enable these communities to develop safe access to and from these spaces and, wherever possible, to link them to other community facilities, green areas and the wider countryside;
- target communities which are socially and economically disadvantaged and which have poor access to local open space;
- provide advice to communities throughout the application and implementation processes;
- provide capacity building and training to help communities gain the skills and knowledge they need to manage and maintain their green space sustainably and to move on to further projects.

What is a Doorstep Green?

A Doorstep Green will be multi-purpose and responsive to the needs and desires of the local community. The Countryside Agency (CA) will not be offering a series of ready made schemes, instead, the communities will approach the CA with their own ideas and realise their Doorstep Green through community action. Each Doorstep Green will be different but will meet the following criteria:

- It will be close to where people live.
- It will be located where communities and individuals, who are socially and economically disadvantaged will benefit or where access to green space is currently poor.
- It will be available to everyone.
- It will be accessible to those who may have difficulty in reaching open space; for example elderly or disabled people.
- It will be attractive to those who may lack confidence in making use of open space, such as some women or ethnic minority groups.
- It will have strong local support and the green space will make a substantial contribution to community life, including being used for community events.

- It will be designed and created as a result of a genuinely inclusive community consultation exercise in which children and young people are involved.
- It will be managed by local people, and there will be provision for its continuing maintenance.
- The community will retain some form of tenure on the land. The nature of this will depend on circumstances such as the value of the grant and the wishes of the land-owner.
- The Doorstep Green will make a positive contribution to the local environment and to the visual regeneration of the locality.

Where possible, links will be created to other green spaces and community facilities so that the Doorstep Green is at the hub of community life. We want the Doorstep Green to be flexible and so able to meet a variety of needs. It should also be capable of evolving to meet the changing needs of the local people who want to use it.

A Doorstep Green may be some or all of the following, depending on the needs of the community, as determined through the consultation process. A place where:

- children can play creatively and safely;
- teenagers can meet;
- everyone has opportunities for outdoor learning;
- people can walk;
- nature can thrive and be enjoyed;
- informal sports, games and jogging can be enjoyed (e.g. with a trim trail);
- there are community art displays;
- people can sit and watch the world go by;
- there is a quiet area for peace and reflection;
- there is a community garden, wood, orchard or allotment;
- there are easy links to nearby green spaces or places of interest; and
- there is a 'gateway' for further exploration of areas of countryside.

The types of land which will come into use as Doorstep Greens could include the 'grey' areas in and around housing estates, derelict or disused land, agricultural land, poorly managed or neglected recreation grounds and playing fields. Some Greens will be new; others will be improvements to current provision.

Projects which improve access to and links into the Doorstep Green will also be eligible for funding. These can include improvements to footpaths or the creation of new footpaths, pedestrian crossings, signposts and publicity items aimed at making local people more aware of the Doorstep Green and what it offers them.

The Application Process

In essence the CA is looking for applications where:

- new or improved green space is created in an area of need;
- the wider community is actively involved in its design, creation and long term care; and
- there is strong local support for a green.

Who Can Apply?

The CA is looking for applications from a wide range of interests including community groups and local authorities, or a partnership of local groups set up specifically for the purpose.

How to Apply for a Doorstep Green Grant

For more information about Doorstep Greens and the grant application process, phone the New Opportunities Fund call centre on 0845 0000 121 and ask for a Doorstep Greens leaflet. The leaflet will explain the process and give contact addresses for the advisors of the eight regional offices around England. The call centre can also give information on the other schemes funded under the Green Spaces and Sustainable Communities Programme.

WORKSHOP PAPER
AN APPLICATION TO THE HERITAGE LOTTERY FUND BY THE
YORKSHIRE DALES MILLENNIUM TRUST

Iain Oag

Director, Yorkshire Dales Millennium Trust

Background to the Yorkshire Dales Millennium Trust

The Trust was founded in 1996/97, through the initiative of the Yorkshire Dales National Park Authority. The Authority, at the time felt that in response to an increasing need for external funding sources, it was appropriate to set up a vehicle specifically for the purposes of raising both structural and other funds from a general public and from corporations and charitable trusts.

The charitable trust was constituted independent of, but clearly associated with, the Park Authority. The Authority part funded its establishment and resourced the first key appointments through secondments. The remainder of the set up costs were provided by the Millennium Commission, with whom the Authority and subsequently the trust were in negotiation for a major funding package for an environmental and community programme in the Dales.

In 1997 the trust embarked upon its Millennium Commission funded Programme, 'Dales EnviroNet', which over four years until now, 2001, spent £9 million on 350 projects throughout the Dales. This has been an umbrella programme lead by applications derived from the local community for projects in many categories of the landscape and built environment as well as community based schemes.

The Trust has acted as a broker with access to the Millennium Commission's funds matching them with a variety of sources alongside the applicants. Co-funding partners include the Yorkshire Dales National Park Authority, English Nature, English Heritage, the Environment Agency, the Forestry Commission amongst many others, alongside local government, North Yorkshire CC, and the three local councils, Craven DC, Richmondshire DC and South Lakeland DC. Various European structural funds were also accessed.

In addition the Trust runs its own dedicated fundraising activity with a donor base of 21,000 members of the public and a corporate members scheme encompassing some 100 companies.

In November 1998, the Trust opened discussions with The Heritage Lottery Fund (HLF) in regard to a further funding package to succeed the Millennium Commission.

Timetable

It was apparent on opening discussion with HLF that policy would have to be made concerning both the elements of grant delegation to applicants to the programme and how the 'umbrella' would work. This proved a difficult obstacle and even when the initial application was presented in May 2000 it was not resolved.

This resulted in a rejection of the proposal in principle in its then current form in November 2000, and required the Trust to represent its bid to a different and smaller formula during December 2000 and January 2001. This revised proposal was approved by the Trustees of HLF in March 2001, with the programme to commence in May 2001.

Approval was given at Stages 1 and 2 to the first year with a Stage one approval for years two and three with an annual grant of £500,000 each year representing 54% of the total programme value.

Planning Objectives

The Trust has a specific mission to work with local communities and organisations to protect and conserve the key landscape features of the Yorkshire Dales, its flora and fauna, buildings of cultural, architectural, historic or educational importance, and to carry out other activities which will benefit the inhabitants of the Dales.

To meet this mission through the proposed programme, the key planning criteria followed by the Trust in constructing the bid was to align the strategic objectives of the National Park Authority as set out in their Strategic Plan with HLF so as to meet specifically HLF's requirements. In turn these needed to represent the key needs of partner organisations, which under the auspices of an umbrella scheme would meet locally derived priorities.

Operational Objectives

Five main themes were adopted under which individual project categories could fit. These were as follows:

- To implement Biodiversity Action Plans within the natural heritage
- To conserve the outstanding built heritage
- To increase understanding and enjoyment through improved access
- To enable local communities to increase their direct involvement
- To promote socio-economic wellbeing in the Dales

Issues

Aside from the lack of a defined policy for umbrella and delegated schemes, several other issues needed to be addressed within the strategy for the proposals.

The programme is required to be more than the sum of its parts. It was necessary to achieve a balanced portfolio of project types. The application was therefore grounded upon an integrated programme for the enhancement and conservation of the heritage assets within the Yorkshire Dales. The Dales were designated a National Park in 1954 to ensure that the unique landscape is preserved for the national benefit. It was not a designation of individual attributes, but of a collection of contributing assets. The Yorkshire Dales National Park Authority has a duty to conserve and enhance these assets and to promote their public understanding and enjoyment, enacting this through its strategic management plan.

The Yorkshire Dales Millennium Trust, in constructing the proposal, took the themes relating to heritage assets from the National Park's Strategic Management Plan and prepared an integrated apportionment of works and for its funding. It deliberately chose to reflect this in a balanced portfolio of activity such that individual themes were not emphasised at the expense of others, rather to effect a collective enhancement. It followed a natural order dictated by the character of the Yorkshire Dales themselves.

Within the proposed framework individual applicants are to be able to come forward and make their contribution towards the preservation and enhancement of the Dales as a whole and across its total geography.

In practical terms there are targets for each heritage theme which can be monitored for the efficacy of individual projects as well as their contribution to the whole. Additionally there is a benefit from focussing activity through a co-ordinated mechanism which designed to deliver numerous schemes within an agreed overall strategic programme, rather than random applications requiring individual assessment outside any predetermined strategy.

The proposals could have concentrated on individual assets, limestone pavements, or hay meadows and woodland, or barns and dry-stone walls. Alternatively they could have been based upon a partnership with one of the many active agencies. The result might have been an unbalanced and ultimately adverse result.

Mechanics

The first task was to assemble the partnership of the statutory agencies (English Nature, English Heritage, Environment Agency, Forestry Commission etc); Planning authorities (North Yorkshire County Council, Yorkshire Dales National Park Authority, Local and Parish Councils); and the local communities' representatives. These were invited to contribute their ideas at Panel Sessions, where they were briefed, and successively the programme was assembled along with commitments to funding and contributions in kind. Subsequently the process of delivery, based upon the Trust's existing modus operandum (of applications, approvals, grant offers, claims, ongoing maintenance of project purpose, etc) was established. A fully costed programme was collated into a cohesive scheme. Finally the bid documentation was prepared.

At all these stages HLF were involved in the deliberations and suggestions and alterations taken on board as they were raised.

WORKSHOP PAPER
LOTTERY FUNDING FROM THE POINT OF VIEW OF A SUCCESSFUL
APPLICANT – KENNET & AVON CANAL RESTORATION PROJECT

Michael Goodenough

Kennet & Avon Canal Waterway Manager, British Waterways

Introduction

British Waterways on behalf of the Kennet & Avon Canal Partnership (representing all riparian local authorities), the Kennet & Avon Canal Trust and the Association of Canal Enterprises (representing 50 waterway businesses) developed a project entitled 'Access to Your Working Waterway Heritage'. This formed the basis of a business plan for a bid to The Heritage Lottery Fund in October 1995 and succeeded in October 1996 when granted £25m from the Heritage Lottery Fund to enable a six year £29m programme of work to be carried out.

The mission of the project and the partnership objective is

'to secure the structure, operation and environment of the 87 mile working waterway heritage of the Kennet & Avon Canal (K&A) to make it operational, sustainable and accessible for future generations'.

One of the key conditions of the Heritage Lottery contract was that a 'Conservation Plan' be developed which would guide the whole of the works and future management of the waterway. The Conservation Plan has taken over two years to develop and includes built heritage, landscape heritage, ecology and visitor amenity which includes the development of a Public Transport and Visitor Management Strategy.

A project team was formed to deliver the project comprising a Project Manager, Engineers, Finance Manager, Ecologist, Landscape Architect and Design Engineers and have progressively administered the project over the last four years covering a wide range of individual projects from channel relining works averaging £1 million per km to visitor facilities including visitor moorings, towpath improvements etc. The Heritage Lottery Fund appointed Ove Arup as the Lead Monitor with English Nature, English Heritage and The Countryside Agency as Associate Monitors and all works have to be approved by these organisations.

The Kennet & Avon Canal project is still the largest single grant from The Heritage Lottery Fund and the Conservation Plan is recognised by the Fund as a template and pre-requirement for further such projects.

Presentation

The presentation by PowerPoint slide show, entitled 'Creating a Sustainable Environment' highlighted the following issues:

- The powerful historical aspect of the 200-year old waterway environment which was originally created at the time of the Napoleonic wars and transformed villages and towns across southern England during the Industrial Revolution.
- Today's transformation of what once was an industrial network into one of the country's leading recreation networks attracting over 10 million annual visits on the Kennet & Avon Canal alone.
- The waterway's strategic importance connecting the Severn Estuary with the Thames Estuary and the varied built and natural heritage value.
- The importance of a socio-economic study carried out by Coopers & Lybrand which identified the significant benefits in employment and visitor spend if restoration could be completed. The completed project will increase annual maintenance by approximately £1 million per annum. This will be met by an increase in self-generated income of £750,000 per annum and topped up by annual maintenance agreements with the riparian local authorities totalling £250,000 per annum. The completed project will generate £28 million per annum spend in the community, support 2,600 full time jobs and attract £50 million of private sector investment.
- A steering group was created - The Kennet & Avon Canal Partnership, representing those parties with an interest. This included British Waterways - owner of the canal, The Kennet & Avon Canal Trust representing volunteers and a charitable organisation, all the riparian local authorities and ACE an organisation representing over 50 waterway businesses ranging from marinas to chandleries, pubs etc. The project developed from an initial 'securing the infrastructure' to an overall project which recognised the importance

of access, visitor improvements, heritage, environment and ecology. The project was supported by a number of VIP patrons and wide support from communities between Bristol and Reading and a presentation to riparian MPs was made during the submission process at the House of Commons. The final submission included an appendix of over 500 pages covering over 900 individual items and included engineering appraisals, access and improvement works and fees, design and supervision.

- Match funding was a key element and the partnership provides £4 million of the £29 million overall project.
- The application was made in October 1995 and an award made public in October 1996. During this time the waterway hosted a visit by trustees of The Heritage Lottery Fund which culminated in an opportunity for the HLF to debate and question members of the partnership at a round table meeting. Little contact existed during this period between the applicant and HLF, other than the last few months when various meetings and telephone conversations took place refining some of the financial detail of the project.
- Signing the contract took another year, October 1997. This period included much debate and negotiation on the actual clauses, as the Kennet & Avon Canal project was obviously significantly different to many of the previous awards. One of the main conditions of contract is that a Conservation Plan be developed prior to the execution of any works. The Conservation Plan was to be developed in agreement with English Nature, English Heritage and the Countryside Agency. This process took some considerable time and involved much debate at times testing the requirements of widely differing interests.
- The partnership exists on an informal basis with a common 'Memorandum of Understanding'. In addition the riparian local authorities entered into 21-year maintenance agreements on the same date as The Heritage Lottery Fund contract with British Waterways. This demonstrated both the match funding support and also a key element of the future financial sustainability. The project is managed by a project team comprising a Project Manager, Engineers, Ecologist, and Landscape Architect. Close liaison exists with the client, The Kennet & Avon Canal, and a meeting of the steering group representing the partnership is held quarterly where a full report and debate about progress and topical issues takes place. Ove Arup (Consulting Engineers) are HLF

Principle Monitors and close day to day contact is maintained. Monthly valuations take place and cash-flow is a critical element of the project which at times has reached over £1 million per month. British Waterways is registered to recover VAT which could otherwise have presented considerable financial concerns.

- The Partnership has recently approved a proposal to successfully complete the project on time and within the available grant despite many demands during the project delivery from a whole number of different directions. This now requires a formal submission to HLF Trustees fulfilling many HLF questions before acceptance.
- The Conservation Plan requires British Waterways to monitor various aspects of the canal environment to ensure environmental sustainability is achieved. All future work on the waterway is also to be carried out in accordance with the Conservation Plan.

Workshop Discussion

Funding and Resources Required to Submit an Application.

Many delegates were concerned that either their organisation did not possess the necessary expertise to submit a formal application, or in any event could not fund a formal application. They felt the need for some financial assistance and a process to enable potential projects to be funded this way. They felt the need for 'a fast track' approach for certain applications for projects with a time related need. Many potential applicants could not risk the expense of funding an application which might fail. Consultants were often necessary but many applicants were unable to fund them.

Communication Between Funders and Applicants

A request for more input from funders during preparation was supported by all. Certain applicants felt they were not aware of what HLF require and that there often seemed to be a difference between what applicants considered a project to be and what the funders required.

Partnerships

Delegates realised the importance of a wide partnership representing as many aspects of the final project as possible. It was acknowledged that the experience on the Kennet & Avon of developing a steering group to represent the partnership was not only key in delivering the project but also future management.

Social Impact

It is important to establish the social impact of multi million pound projects and the Kennet & Avon project will monitor various aspects including social impact on a five yearly survey.

Difficulties Perceived by Applicants

A number of delegates felt the terminology used in the various publications/application forms involved a degree of bureaucracy and that information should be produced in plain English. Many potential applicants found it difficult to identify a potential funding source. It was also acknowledged that a long timescale for an application process could affect the availability and enthusiasm of volunteers involved in the application/project.

Suggestions for Improvements to Application Processes

- Use of a two-stage approach; many applicants believed this would enable limited resources to be effectively applied.
- Visit by funders; there was unanimous support for persons/organisations to provide some clear, unambiguous guidance.

Conclusion

In conclusion, the workshop established that whilst many felt they had a worthwhile project, they considered it difficult to convert that project into a successful application, due in the main to limited funds and resources/expertise. Smaller projects in particular, although extremely worthwhile and able to provide a positive visitor experience, were often unable to submit applications without external (and costly) help.

WORKSHOP PAPER
THE COMMUNITY FUND
(FORMERLY KNOWN AS THE NATIONAL LOTTERY CHARITIES BOARD)

Anna Orton

Policy Officer for Wales, National Lottery Charities Board

Purpose of Workshop

To provide information on the Community Fund's (CF) grant programmes and assessment procedures, with links to countryside based projects.

Changing from the National Lottery Charities Board to the Community Fund.

A name that is easier to remember and illustrates that the grant money is primarily for community benefit. The mission has not changed:

'to give grants to help meet the needs of those at greatest disadvantage in society and improve the quality of life in the community'.

The workshop group thought the change would make the organisation sound less bureaucratic. Some group members undertook to spread news about the name change.

Who Could Apply for a Grant

It was explained to the group that because of the way The National Lottery Charities Board (NLCB) had been set up, it was not able to grant aid the statutory sector. Therefore projects funded would have to be led by voluntary, not for profit organisations. This did not exclusively mean registered charities. As many of the group worked for ineligible bodies, discussion revolved on their work with community groups and their role as advisors on available funding.

It was confirmed that organisations set up for purposes beneficial to the community could be deemed to be charitable in nature and therefore eligible to apply to the Community Fund.

The recreational Charities Act 1958 lays down that it is charitable

'to provide, or assist in the provision of, facilities for recreation or other leisure time occupation, if the facilities are provided in the interests of social welfare'.

Basic Requirements

CF funding is additional to public funding, and can not be used to replace statutory funding. Statutory organisations can not benefit from a grant, meaning that any project taking place on land owned by, say, the local authority will need to provide evidence of a lease. The lease needs to give the applying organisation the right to carry out the project on that land and give security for a minimum of five years for future use of that land or property. The length of the lease required will increase according to the value of the grant.

This raised an important issue for the group, many of whom sought community involvement to improve or change property owned by their employers. They acknowledged the need to discuss this internally so that projects could move forward.

All applicants need a constitution, a bank account and set of accounts or forecast of income/expenditure. Requests for revenue and capital costs can be made and there is no need for match funding. The fact that the CF offers 100% grants was welcomed, as was also the ability to mix capital and revenue. It had been assumed by some that match funding would have to be provided, which is the case with other Lottery distributors but not the CF. There was some concern over the ability of new groups to apply, but it was confirmed that such applications were welcome and that the experience of members in other contexts would be taken into account.

Size of grant - the CF had introduced in their new application packs guidance on the likely maximum award under the main grants programme. This varied between each English region and the countries and applicants needed to obtain the appropriate pack for their area. The maximum range is from £250,000 to £500,000.

Another variation in the CF's policies according to region or country is the funding priorities for each of the awarding committees. Projects meeting the priorities are more likely to get funded and it would be worthwhile establishing what these are for your area. The details would be in the application pack for the area.

Concern was expressed about the group members having to choose which projects in one community should be put forward as they assumed that the CF would choose between projects from the same area. The assessment process was explained, and that each project is

judged on its own merits. The CF does not want to see bids that duplicate each other, but there is no limit on how many applications a group can put in or an area can put in. Because a project three miles down the road has been funded does not mean a neighbouring bid will be automatically rejected.

The Grants Programmes

Main Grants - recent changes mean that two themes have merged into one, the one being the CF's mission statement. Applicants must show how the proposed project meets the needs of the disadvantaged and improves quality of life in the community. It was emphasised that benefit to people should be the underlying objective of any bid, the CF did not prioritise environmental schemes that showed no community benefit. Projects that could be funded include improved access to services, training, recruitment and support of volunteers, improvements to community facilities.

Other changes included a shorter form, improved layout and improved help notes. On average it takes five months for a main grants application to be processed.

Awards for All - existing or planned for every country, offering grants between £500 and £5,000. Other Lottery distributors fund the scheme, which is a joint initiative, primarily targeting community based activities. A good scheme, particularly for small groups seeking a manageable amount of money, it is a popular source for equipment, volunteer costs and one-off training costs.

A brand new scheme being introduced through the year to all parts of the UK is designed to meet the needs of groups who find Awards for All too small and main grants too demanding. It is called 'Grants for projects costing up to £60,000'. Like main grants it can offer capital and revenue funding for up to three years. However, it will have a shorter form and decisions will be reached more quickly. The group was advised to contact their local office for the schedule for its launch in their area.

Examples of Funded Projects

The group discussed some of the projects they had in mind for funding, they were all at different stages of development. Examples given of existing grants included the following showing a large difference in nature and cost of projects:

- British Trust for Conservation Volunteers: £1,369,107 to support community driven practical action working with non-white ethnic communities in disadvantaged areas.
- Royal Society for the Protection of Birds: £154,476 to organise community led biodiversity plans targeting people who would not be traditional members of the RSPB or its partner, the local Wildlife Trust.
- Rectory Wildlife Gardeners - £1,716 to replace old rotten interpretation boards with new ones at wheelchair height and generally help to improve a garden open to the public.

At the End of the Session

The group had a clearer picture of the grant programmes run by the CF, how applications are assessed, top tips on things to consider when applying and ideas on the kinds of projects that can be funded.

WORKSHOP PAPER
COUNTRYSIDE AGENCY LOCAL HERITAGE INITIATIVE

Chris Burke

Local Heritage Initiative Advisor, Countryside Agency

The aim of the workshop was to go through the eligibility criteria for the Local Heritage Initiative and to look at some example case studies to illustrate the scheme. This would enable participants to feel equipped to advise communities on whether their ideas are suitable for the Local Heritage Initiative (LHI).

The key issue explained was that, regardless of the heritage object of the asset in question, for an application to be successful it must clearly be a local community initiative (as distinct from a local or statutory authority initiative – although town parishes can apply), and have the overall aims of:

- raising the awareness and understanding of the existence and value of identified local heritage assets among the local population and the contribution of these assets to the history and development of the locality;
- stimulating further action in the caring of heritage assets in the long term and exploring other aspects of the local heritage.

In order to achieve these overall aims, and regardless of the local heritage subject in question, the proposal must be able to provide clear evidence in the activity of the project that:

- local people will be able to participate in its implementation and gain skills or knowledge by taking part;
- the outputs of the project will engage the interest of the wider local population and enhance their understanding of the local heritage;
- the outputs are stored and made publicly accessible in the long term.

The promotional literature of the Local Heritage Initiative lists example of the many types of heritage asset that can be considered across the defined heritage types; Built, Industrial, Archaeological, Natural, and Customs and Traditions.

There is therefore an extremely wide range of heritage that can be the subject of an application, however, it will not be the academic or statutory level of heritage value of a

particular asset that will determine whether a project is a priority for funding under the LHI. The determining factor will be the overall aim and activity stated above.

Statutory designated heritage assets (e.g. listed buildings, scheduled ancient monuments, Sights of Special Scientific Interest etc.) will still be eligible if the other criteria are met. The Countryside Agency would consult with technical advisors (e.g. county archaeologists, English Heritage, English Nature etc.) about the suitability of a project, particularly if physical restoration or investigative work is intended.

The long term storage and public accessibility of written and photographic material of all projects is of vital importance and therefore all applicants are encouraged to engage with their county records office and explore the depositing of material with them and in other places such as museums and libraries.

Notes from Presentation Sheets (These were provided as handouts for the workshop and covered criteria and funding levels in more detail)

The Local Heritage Initiative:

- Is funded through the National Lottery via the Heritage Lottery Fund.
- Has extra funding from the Nationwide Building Society.
- Can offer grants up to £15,000 per phase to a total of £25,000.
- Is managed by the Countryside Agency through its regional offices.
- Will definitely run for the next three years and is proposed to run for at least 10 years.
- Has one advisor and one administrator based in Bristol who cover the whole of the South West Region.

All Projects Must be Able to Demonstrate that:

- the applicant is a community or voluntary group (including town and parish councils) and the group has substantial support within the community;
- members of the local community can participate in the implementation of the project and can gain new skills and knowledge by taking part;
- information resulting from the project will be stored in such a way as to be publicly accessible in the long term, preferably through public records offices, libraries, museums and other archives, and through use of information technology such as the internet.

Physical restoration of a heritage asset can be part of a wider project that addresses all of the above criteria.

Survey and recording projects with no physical work are just as welcome provided all criteria are addressed.

The Local Heritage Initiative Cannot Fund:

- One off repairs to individual heritage objects (unless part of a project embracing all the criteria).
- Re-creation of lost heritage or creating new heritage for the future.
- Any work that is a statutory responsibility e.g. Rights of Way.
- Ongoing costs -- core costs/staff salaries.
- Retrospective funds.
- Individuals.
- Groups/organisations who make a profit.

The Local Heritage Initiative is Unlikely to Fund (Low Priority):

- Creation of development of new heritage centres.
- Archaeological digs.
- War memorials (unless part of a wider project).

Leases must have 25 years to run on heritage assets that are the subject of grant aid.

WORKSHOP PAPER
TIPS FOR SUCCESSFUL APPLICANTS: LOTTERY FUNDING FROM THE
POINT OF VIEW OF A PROFESSIONAL FUNDRAISER

Nitin Thakrar

Consultant

Introduction to the Developing Links Project - an example of a Heritage Lottery Fund application process

The aim of this paper is to provide an insight into the Heritage Lottery Fund (HLF) application through a practical project. It will begin by briefly explaining the project aims. It will then move onto the process taken to make the Lottery application, the success factors and tips in making an application.

Project Background

The project was developed by the Council for National Parks (CNP) and the Black Environment Network (BEN). CNP is the national charity that works to protect and enhance the National Parks of England and Wales, and areas that merit National Park status, and promote understanding and quiet enjoyment of them for the benefit of all. CNP is the only national, voluntary sector organisation dedicated to National Parks. BEN promotes equal opportunities with respect to ethnic groups in the conservation, preservation and development of the environment, in the context of sustainable development. The Developing Links Project (DLP) began over two years ago when Judy Ling Wong from BEN was invited to speak at CNP's 50th Anniversary. Judy inspired the conference to take the bold step to develop the project. The project began to move away from the question 'why?' towards 'when?' and 'how?' The DLP project established the following aims:

Vision

National Parks Authorities and voluntary sector organisations, which work with National Parks, will engage with large sections of the ethnic communities to incorporate social inclusion through the involvement of ethnic communities in deprived areas.

Aim One - Raise Awareness

To develop new audiences for heritage from identified deprived areas and draw up detailed strategies for engagement with targeted ethnic communities in relative easy access to National Parks.

Aim Two - Provide Information and Interpretation

To increase understanding and enjoyment of the heritage in National Parks by ethnic communities by making National Park information and interpretation methodology more popular and accessible.

Aim Three - Increase Visits

To encourage participation in heritage activities by facilitating visits to National Parks by a diversity of ethnic groups and ensuring a warm welcome.

Aim Four - Ensure Sustainability

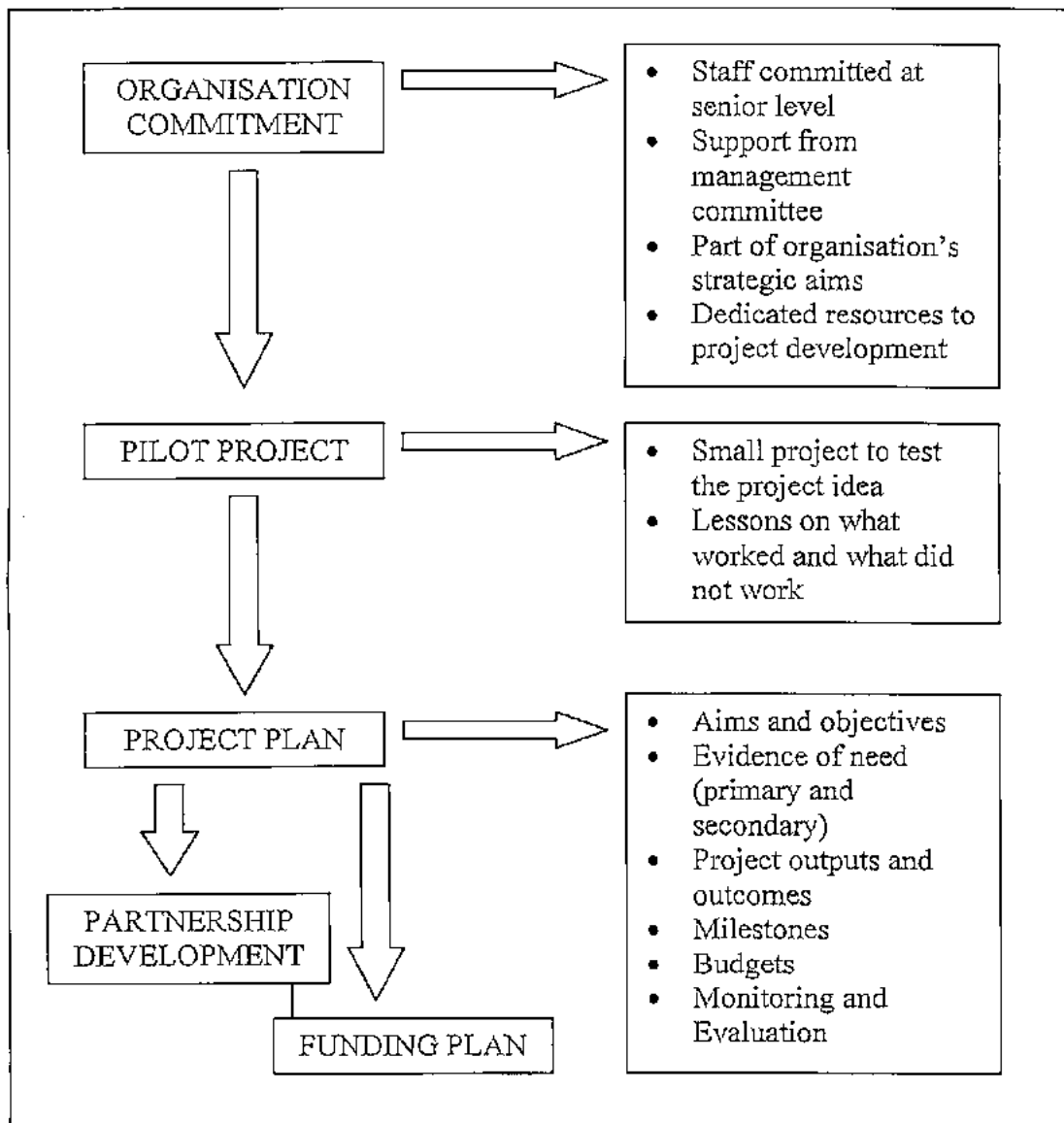
To encourage enduring and sustainable relationships involving active participation in heritage activities by members of ethnic groups in National Park voluntary sector or statutory bodies.

Aim Five - Project Policing

To develop monitoring and evaluation mechanisms to assess the level of success for the project in relation to its aims.

Pre Application Stage

CNP decided to develop a pilot project with the support of funds from the Gatliff Trust. The success of this gave confidence to develop the project plan, funding plan and partners. The process that developed before an application was made was as follows:



Application

One of the funders identified in the funding plan was the HLF. Revenue funding was sought where funding of 90% was possible. A consultant was appointed to develop the project further, liaise with HLF and draw up the application. During the application process there were three meetings with HLF, countless telephone conversations, six comments on the project strategy and a clarification letter from HLF regarding the budget and other matters.

During this project application, partnership developments were strengthening which gave increasing weight to the application. The Countryside Agency came in with £10,000 towards the project, the National Parks confirmed their services in kind, the Youth Hostels Association offered support in food and accommodation, the Field Studies Council offered their professional support to develop information and interpretation of the National Parks by ethnic communities. In February 2001, the HLF approved a grant of £158,000 (61%) towards the DLP.

Key Success Factors

Leadership and commitment

The whole organisation (including the staff, volunteers, the members, council members and the executive council) galvanised itself behind the project. A further commitment was that the project became part of CNP's strategic aims and resources were dedicated for the project development.

Planning

A great deal of groundwork had been done to test and plan for the project. The pilot project provided valuable lessons. The project plan gave a road map with key milestones for the project development. The funding plan was then written to take a multi funding approach towards making relevant applications.

Partnership Support

Project partnership was crucial to the project funding in terms of providing credibility and resources. The Black Environment Network provided inspiration and valuable guidance in the initial development of the project particularly in identifying need. The National Park authorities were central to the project's aim of meeting the beneficiary's need. Other partners

were becoming valuable in providing financial and in-kind resources. HLF were invaluable in the application process showing excellent communication and a professional approach.

Key Tips in Applying for Funding

Put Time, Money and Commitment into the Project

Set a budget (this could be a percentage of the total bid) for project development to pay for the pilot, your time, research material, researching needs. Do not underestimate this, particularly the time you will need for revisions to the application or further background work.

Pilot the Project

Run a small test on it. Learn from it and use it for the big one.

Provide Evidence

Provide Evidence of need from primary research or from studies already undertaken. Be clear on what the project need is. This need should come from the beneficiaries and not the organisation.

Partners

You need them. Be strategic in who you choose to have partners. Choose those who are going to give resources, credibility and support to the project development. Spend time with them on the project development, understand their requirements from the project and accommodate them into the project plan.

Policy

Make sure you link your project aims and objectives with the policy and criteria of the funder. Read their funding documents and ask questions on points that need clarifying. Check with the funder to ensure that your project aim meets their funding criteria.

Plan

Write your project plan after you have you have tested the waters with the project need, a pilot and partners. Your project plan should have a funding plan. The funding plan should consider the different funders' criteria and how you can answer their requirement through the project. Make a contingency plan in case your project does not get approved.

Personality

After you have enthused the right people in your organisation engage and entuse the funder from the beginning. Make them into the project champion to they can 'sell' it internally. Involve your funder with project development. Discuss your idea and the process you will go through to make your application to them. Get them to make comments on the project aims and process before application. Do not throw any surprises to them in the application. Make sure they know of any changes that will take place in the project aims or the project application process.

Patience

Patience is needed with any funder, particular the Lottery. Plan for at least a year (in The Council for National Parks' case it was eighteen months) from the start of your discussions with the Lottery to the point when you receive your award.

Quick Checklist Before Submitting Your Application

- Is the organisation committed to the project? Is there a leader assigned?
- Is there a needs analysis of the beneficiaries?
- Is the organisation committed to the project? Is there a leader assigned?
- Have I documented what the need is? Does the project plan reflect this need?
- Has the project been tested? Are there similar projects I can learn from?
- Have I set aside funds for project development?
- Is there a written project plan?
- Is there a written funding plan?
- Do I have strategic partners and how are they involved?
- Does my project aims meet the funders' criteria?
- Have I got the right person from the funding body to liaise with?

WORKSHOP PAPER
NEW OPPORTUNITIES FUND 'GREENSPACES AND SUSTAINABLE
COMMUNITIES' PROGRAMME

Helen Earner, Policy Officer, New Opportunities Fund,
Fflur Lawton, Senior Information Officer, New Opportunities Fund, and
Elaine Reynolds, Out of School Hours Learning Co-ordinator, Mountain Ash Comprehensive

Summary

The purpose of the workshop was to provide delegates with detailed information on the New Opportunities Fund Green Spaces and Sustainable Communities Programme and to share the experiences of Mountain Ash Comprehensive who successfully applied for funding during 2000.

Helen Earner, Policy Adviser and Fflur Lawton, Senior Information Officer represented the Fund and Elaine Reynolds spoke on the work completed by Mountain Ash Comprehensive School to deliver an out of school hours learning project.

Green Spaces and Sustainable Communities Programme

The Green Spaces and Sustainable Communities Programme, being delivered through 12 Award Partners, is to be launched in spring (April/May)

In England

Five open grant schemes will deliver funding to create, improve and provide access to green spaces, and will support projects to encourage sustainable communities. Award partners include:

- Barnardo's, offering grants for children's play projects through the 'Better Play' scheme
- The Countryside Agency, offering grants for community spaces through the 'Doorstep Greens' scheme
- English Nature, offering grants for local nature reserves through 'Wildspace'
- The Royal Society for Nature Conservation, which will lead a consortium offering grants for sustainable communities projects through the 'SEED' scheme
- The British Trust for Conservation Volunteers (BTCV) offering grants for local environmental projects through the 'People's Places' scheme

Two umbrella schemes will deliver funding to create improve and provide access to green spaces. Award Partners include:

- Sport England offering support to improve playing fields and playgrounds and innovative play schemes under the 'Playing Fields and Community Green Spaces' scheme.
- Sustrans offering support to deliver sustainable transport projects in disadvantaged areas across England.

In Northern Ireland

A consortium led by the Northern Housing Executive will deliver funding through the 'Creating Common Ground' grants scheme. This scheme will provide funding set within three grant bands: less than £10,000 (including small grants up to £3,000); less than £25,000; and less than £50,000.

In Scotland

The New Opportunities Fund, together with Highlands and Islands Enterprise launched the Scottish Land Fund in February offering support for rural communities to purchase and manage land. In May, the Green Spaces and Sustainable Communities Programme 'Fresh Futures' will be launched by a partnership between Scottish National Heritage and Forward Scotland. 'Fresh Futures' will deliver three schemes, a single open grants programme offering funding for green spaces and sustainable communities, a green spaces umbrella scheme and a sustainable communities umbrella scheme.

In Wales

A consortium led by the Wales Council for Voluntary Action will deliver funding through the 'Enfys: Green Spaces and Sustainable Communities' scheme. The scheme will be launched in May and will deliver funding via three routes: Process drivers (200 grants averaging £5,000 to support partnership activities); Community drivers (140 grants averaging £25,000 to support community led initiatives) and Partnership drivers (140 grants averaging £100,000 to support large projects developed in public, voluntary and private sector partnerships).

Delegates were advised to contact the New Opportunities Fund general helpline for information and application packs. They were given a copy of a sample form (Barnardo's 'Better Play' scheme) in advance of printed versions being issued.

Applying to the New Opportunities Fund: Mountain Ash, Out of School Hours Learning Programme

Elaine Reynolds shared her experiences of applying for funding, highlighting the need for applications to the Fund to demonstrate:

- Partnership working.
- Planning to achieve the sustainability of activities planned.
- Consideration for monitoring and evaluating the programme.

Elaine highlighted the support available from staff in the Wales country office and summarised that the hard work demanded to gain funding was worth the positive outcomes gained from planning and delivering a project funded by the New Opportunities Fund.

Key Discussion Points

What is the Difference Between an Umbrella Programme and a Grant Programme?

Award Partners managing open grant schemes have full responsibility to manage the application, assessment, decision-making and monitoring processes needed for their scheme. Every Award Partner managing a grant scheme has issued application forms and guidance that explain how to apply for a grant, stating what is eligible for funding and the deadlines set for submitting an application. An independent assessment panel, appointed by each Award Partner is responsible for deciding which projects will be supported.

Award Partners managing umbrella schemes are working with communities to develop existing or emerging provision that can meet both local needs and the priorities of the Green Spaces and Sustainable Communities Programme. An umbrella scheme involves a single organisation, or consortia delivering a number of identified projects that together form an overall scheme covering one, or more of the priority areas of the programme.

How Will You Ensure Quality and Consistency in the Different Schemes Run By Award Partners?

We will work with the Award Partners to build on good practice and the recommendations of the recent QUEST report to ensure consistency and ease of access. All our Award Partners were chosen because the Fund was satisfied that the activities they have planned, meet the priorities set for green spaces and sustainable communities and are able to meet our quality requirements. All Award Partners are bound by contract to provide quality provision so that

the New Opportunities Fund can monitor all activities and ensure consistency is achieved across the Green Spaces and Sustainable Communities Programme.

Can We Apply to More Than One Award Partner at the Same Time?

If there is more than one Award Partner operating in your country, you are able to apply to more than one Award Partner for funding. In anticipation, to facilitate the process, together all Award Partners have adopted a common approach to designing application materials to ensure consistency and limit the number of forms required to complete.

ANNEX 1. THE IMPACT OF THE NATIONAL LOTTERY ON COUNTRYSIDE RECREATION AND CONSERVATION

Table 1

The Range of National Lottery Funding for Different Countryside Conservation Activities

Primary countryside conservation projects

- habitat and landscape conservation (£113.9 million). Many of these projects also provide improved public access, training, education and research, and so overlap with the other primary countryside conservation categories listed below. Some of these projects involved land acquisition, which was a significant aspect of the countryside conservation funded by the HLF*;
- the improvement of public access to countryside habitats and landscapes (£19.1 million);
- training initiatives and awards (£2.4 million);
- educational initiatives (£1.9 million);
- research (£0.4 million).

Secondary countryside conservation projects

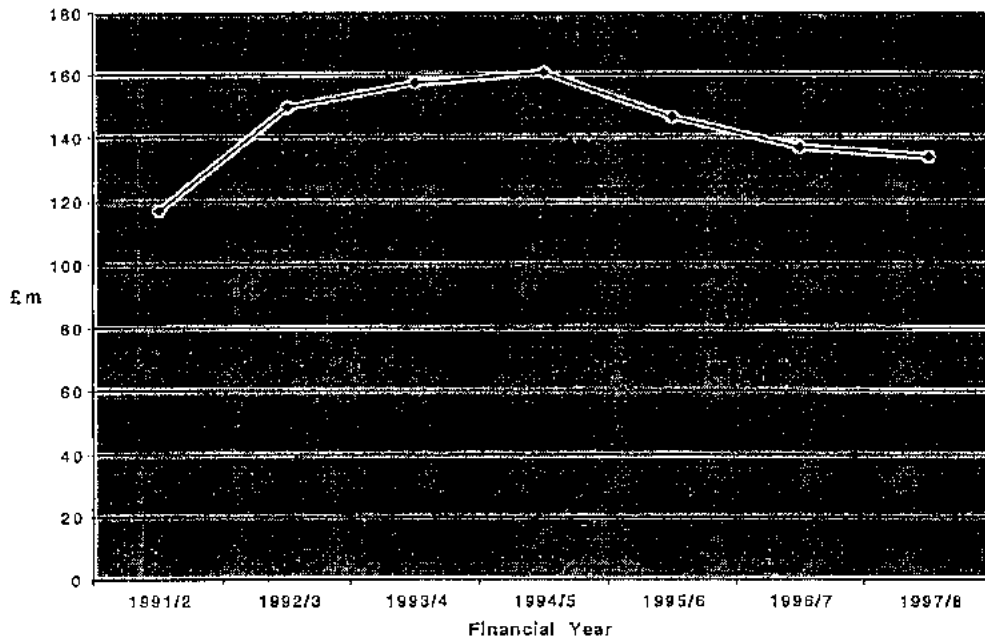
- the conservation of inland waterways (£90.8 million);
- the conservation of collections of biotic material relating to UK biodiversity (£51.7 million);
- the conservation of historic parks and gardens (£27.2 million);
- the conservation of archaeological and historic landscapes (£12.2 million);
- the construction or enhancement of conservation centres (£11.1 million);
- Millennium Greens (£10 million);
- integrated, area-based schemes (£6.5 million).

**By May 1999, the HLF had awarded £46.3 million to enable the acquisition of 200 sites with substantial nature conservation interest totalling approximately 52,000 hectares. This represents an area three-quarters the size of Exmoor or one third larger than the Isle of Wight.*

ANNEX 1. THE IMPACT OF THE NATIONAL LOTTERY ON COUNTRYSIDE RECREATION AND CONSERVATION

Figure 1

**The Level of Grant-in-aid to the Countryside Conservation Agencies
(RPI adjusted to 31st December 1998)**



Notes

1. Figure 1 shows the finance paid by agencies through grant schemes since before the advent of the Lottery and the grants announced for primary and secondary countryside conservation projects by the LDBs, adjusted to take account of inflation using the RPI (all items) index. This chart does not include finance paid through agri-environment schemes or management agreements, only grants paid by the agencies and awarded by the LDBs
2. The government agencies for countryside conservation comprise: the Countryside Commission (now Countryside Agency), the Countryside Council for Wales, English Nature, the Environment and Heritage Service (DOE NI) and Scottish Natural Heritage.

ANNEX 1. THE IMPACT OF THE NATIONAL LOTTERY ON COUNTRYSIDE RECREATION AND CONSERVATION

Figure 2

Millennium Commission and Heritage Lottery Fund Finance for Countryside Conservation by Country *per capita* Between November 1994 and 31st December 1998

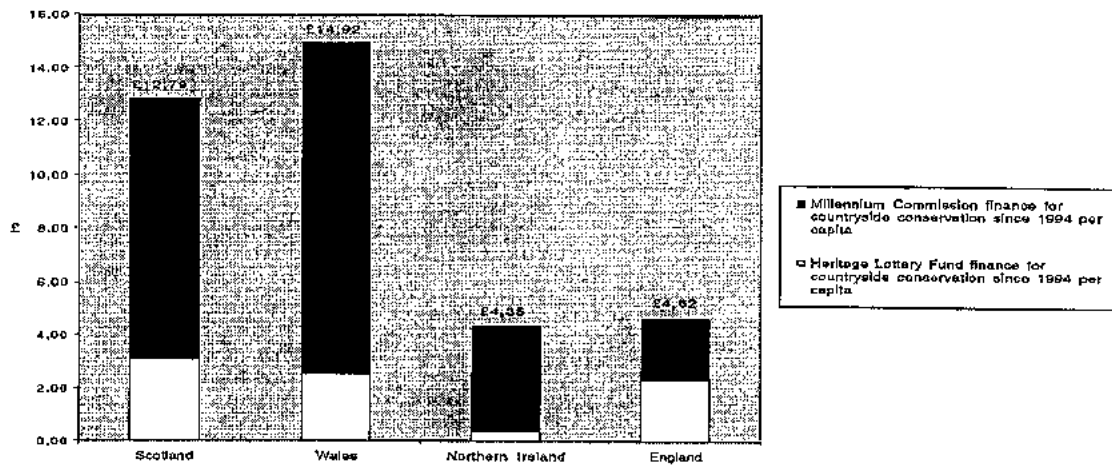
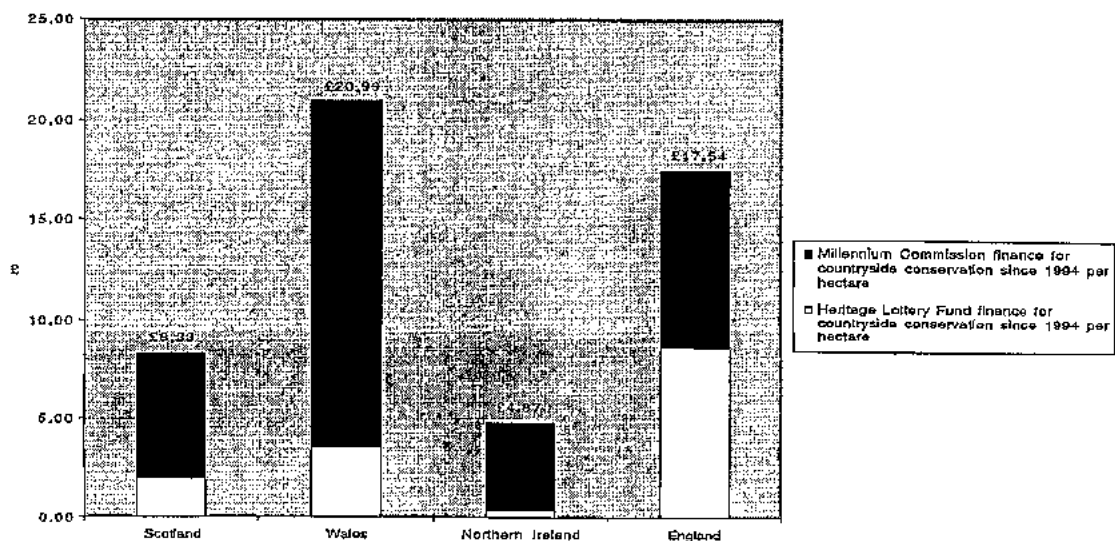


Figure 3

Millennium Commission and Heritage Lottery Fund Finance for Countryside Conservation by Country *per Hectare* Between November 1994 and 31st December 1998



ANNEX 2. APPROVED COUNTRYSIDE AGENCY LOCAL HERITAGE INITIATIVE PROJECTS

Avon Unitaries

Speedwell Fort Watchhouse and Environs Survey

The project aims to increase public awareness of the history and natural history of a disused military fort by undertaking an archaeological and botanical survey. The project will also include some oral history recordings of interviews with the few local residents who lived in the vicinity when the fort was commissioned. All of the resulting information will then be made available through the local records office, a website and a limited edition booklet. The project is lead by a Bristol-based school which will involve its own pupils, local residents and some other community groups.

Batheaston Historic Buildings and Boundaries Project

This project is an investigation of the surviving vernacular buildings and boundaries within the historic village of Batheaston and their importance to the present day ecology and the understanding of the historic development of the village and surrounding countryside. The project will be carried out by local volunteers with professional support and will result in the production of a website.

Radstock Heritage Trail

The objective of this project is to promote the industrial, built and natural heritage of the town of Radstock through the establishment of a heritage trail. The trail will have interpretation signs and lots of promotion. The multiple routes will also be wheelchair accessible. The creation of the trail will involve both skilled and unskilled volunteer labour and will open up access to a large amount of Radstock's physical and intellectual heritage assets.

The Well House Project, Harptree

The aim of this project is to restore and promote a heritage asset known as the Well House in Harptree, near Bath. Local volunteers and skilled craftsmen will work together on the restoration, whilst the interpretation will consist of a website on the history of the building and will contain all the research for the restoration, and a ceramic plaque at the site.

Cornwall

St Keverne War Memorial

This project will raise awareness of the effect of war time on the built heritage and the customs and traditions of the village of St. Keverne through restoration and improved interpretation of the village war memorial, as well as the production of an information leaflet and website. Information will be investigated by the local community, through the parish council and Local British Legion, and with help from the local history society.

Luxulyan Valley Local Heritage Project

The Friends of Luxulyan Valley, a local society aiming to raise awareness among the local population, including schoolchildren and visitors, of the local heritage and traditions of the Luxulyan Valley through investigation and identification of built, natural and heritage assets. A booklet and website will be produced.

ANNEX 3. LOTTERY DISTRIBUTOR CONTACT INFORMATION**Community Fund (Previously known as National Lottery Charities Board)**

<p><i>Corporate and UK Office</i> St Vincent House 16 Suffolk Street London SW1Y 4NL General/Reception: 020 7 747 5300 Enquiries Line: 020 7 747 5299 Email: enquiries@community-fund.org.uk Web: http://www.community-fund.org.uk Previously at: http://www.nlcb.org.uk</p> <p><i>Northern Ireland Office</i> 2nd Floor Hildon House 30-34 Hill Street Belfast BT1 2LB Telephone: 028 9055 1455 Email: enquiries.ni@community-fund.org.uk</p> <p><i>East of Scotland Office</i> Norloch House 36 King's Stables Road Edinburgh EH1 2EJ Telephone: 0131 221 7100 Enquiries line: 0870 240 2391 Email:</p>	<p><i>West of Scotland Office</i> 2nd Floor, Highlander House 58 Waterloo Street Glasgow G2 7DB Telephone: 0141 223 8600 Enquiries line: 0870 240 2391 Email:</p> <p><i>Wales Office</i> 2nd Floor Ladywell House Newtown Powys SY16 1JB Telephone: 01686 611705 Email: enquiries.wales@community-fund.org.uk</p> <p><i>England Head Office</i> 1st Floor Reynard House 37 Welford Road Leicester LE2 7GA Telephone: 0116 258 7000 Email: enquiries.england@community-fund.org.uk</p>
--	---

Countryside Agency - Local Heritage Initiative

John Dower House
Crescent Place
Cheltenham
Gloucestershire GL50 3RA
Tel: 01242 521381
Fax: 01242 584270
Web: www.lhi.org.uk

Heritage Lottery Fund

<p><i>Corporate office:</i> 7 Holbein Place, London SW1W 8NR Switchboard telephone: 020 7591 6000 Main fax: 020 7591 6001 Web: http://www.hlf.org.uk/</p> <p><i>Northern Ireland office</i> Glendinning House, 6 Murray Street, Belfast BT1 6DN Tel: 028 9031 0120 Fax: 028 9031 0121</p>	<p><i>Scotland office:</i> 28 Thistle Street, Edinburgh EH2 1EN Telephone: 0131 240 1570 Fax: 0131 225 9454</p> <p><i>Wales office:</i> Companies House, Crown Way, Cardiff CF14 3UZ Tel: 029 2034 3413 Fax: 029 2034 342</p>
--	---

ANNEX 3. LOTTERY DISTRIBUTOR CONTACT INFORMATION**New Opportunities Fund**

Head Office:
 Heron House
 322 High Holborn
 London WC1V 7PW
 General Enquiries: **0845 0000 121**
 E-mail: general.enquiries@nof.org.uk
 Web: <http://www.nof.org.uk/>

Wales Office:
 13th Floor
 Capital Tower
 Greyfriars Road
 Cardiff CF10 3AG
 Wales Enquiries: **0845 0000 122**

Scotland Office:
 2nd Floor
 Highlander House
 58 Waterloo Street
 Glasgow G2 7DA
 Scotland Enquiries: **0845 0000 123**

Northern Ireland Office:
 3rd Floor
 24 Linenhall Street
 Belfast BT2 8BG
 Northern Ireland Enquiries: **0845 0000 124**

Sport England Lottery Fund

16 Upper Woburn Place
 London
 WC1H 0QP
 Tel: **020 7273 1500**
 Fax: **020 7383 5740**
 E-mail: info@english.sports.gov.uk
 Application Packs
 Tel: **0845 7649649**.
 Web: www.sportengland.org/lottery/lottery_1.htm

Useful Lottery Distributor Websites
 (based on information on the DCMS website)

The Department for Culture, Media and Sport (DCMS) has policy responsibility for the way National Lottery proceeds are given out. It sponsors the National Lottery Commission and co-ordinates the activity of the organisations which distribute money from the National Lottery to the good causes.

the arts - funding a wide range of projects from theatres and galleries to community groups across the UK

www.artscouncil.org.uk - Arts Council of England

www.ccc-acw.org.uk - Arts Council of Wales

www.sac.org.uk - Arts Council of Scotland

www.artscouncil-ni.org - Arts Council of Northern Ireland

millennium commission www.millennium.gov.uk

funding Millennium projects throughout the country and assisting communities in celebrating the year 2000

new opportunities fund www.nof.org.uk

improving the quality of life

national endowment for science, technology and the arts www.nesta.org.uk

supporting talent, innovation and creativity in science, technology and the arts

ANNEX 3. LOTTERY DISTRIBUTOR CONTACT INFORMATION

sport - the Sports Councils are responsible for fostering, supporting and encouraging the development of sport and physical recreation

www.uk sport.gov.uk - UK Sport

www.english.sports.gov.uk - Sport England

www.ssc.org.uk - Sport Scotland

www.sportcouncil-ni.org.uk - Sports Council for Northern Ireland

www.sports-council-wales.co.uk - Sports Council for Wales

www.sportsaid.org.uk - SportsAid (Formerly the SportsAid Foundation)

www.english.sports.gov.uk/people.htm#schools - Active Schools and National Junior Sports Prog

community fund <http://www.community-fund.org.uk> -- as of 9th April 2001.

(previously the national lottery charities board)

awarding grants to charities and community groups

heritage lottery fund www.hlf.org.uk

supporting projects that are aimed to improve the quality of life for everyone in the UK

awards for all www.awardsforall.org.uk

a new Lottery funding programme to help support local groups

film council www.filmcouncil.org.uk

is responsible for developing film industry and culture in the UK

scottish screen www.scottishscreen.com

is responsible for developing the film industry in Scotland

Other Useful Websites

The National Lottery (Camelot) http://www.national-lottery.co.uk/	Sport England http://www.sportengland.gov.uk/
The National Lottery Commission http://www.natlotcomm.gov.uk	sportscotland http://www.sportscotland.org.uk/
National Lottery Good Causes gateway http://www.lotterygoodcauses.org.uk	English Tourist Council http://www.english-tourism.org.uk/
Department for Culture, Media and Sport (DCMS) http://www.culture.gov.uk/	Northern Ireland Tourist Board http://www.nitb.com/
Department of the Environment, Transport and the Regions (DETR) http://www.detr.gov.uk/	Scottish Tourist Board http://www.scotexchange.net/
The Countryside Agency http://www.countryside.gov.uk	Wales Tourist Board http://www.wales-tourist-board.gov.uk/
Countryside Council for Wales http://www.ccw.gov.uk	National Trust http://www.nationaltrust.org.uk/
	Ordnance Survey http://www.ordnancesurvey.gov.uk/

ANNEX 3. LOTTERY DISTRIBUTOR CONTACT INFORMATION

Scottish Natural Heritage

<http://www.snh.org.uk>

Northern Ireland Environment and Heritage
Service - Natural Heritage

<http://www.nics.gov.uk/ehs>

English Nature

<http://www.english-nature.org.uk>

Heritage Council, Republic of Ireland

<http://www.heritagecouncil.ie/>

British Waterways

<http://www.britishwaterways.co.uk/>

Environment Agency

<http://www.environment-agency.gov.uk/>

The Wildlife Trusts

<http://www.wildlifetrust.org.uk>

Coillte Teoranta - The Irish Forest Board

<http://www.coillte.ie/>

Forestry Commission

<http://www.forestry.gov.uk/>

Sports Council for Northern Ireland

<http://www.sportni.org/>

Association of National Park Authorities

<http://www.ANPA.gov.uk/>

ANNEX 4. FUNDRAISING AND THE LOTTERY PROGRAMME

Programme

- 10.00 Registration (Tea/coffee)
- 10.30 Welcome and Introduction (Chair)
Jennifer Stewart, Manager for Wales, Heritage Lottery Fund
- 10.40 Lottery Funding and Countryside Recreation
Dr Kevin Bishop, Senior Lecturer, Cardiff University

Introducing the Lottery Distributors

- 11.00 Heritage Lottery Fund *
Helen Jackson, Deputy Director (Research) Heritage Lottery Fund
- 11.20 Tea/Coffee break
- 11.40 Sport England Lottery Fund
Paul Richardson, Sport England Lottery Fund
- 12.00 New Opportunities Fund *
Helen Earner, New Opportunities Fund
- 12.20 Question and answer session
- 12.45 Lunch

What Makes a Successful Application?

- 1.45 Workshop session
- 3.00 Tea/Coffee break
- 3.20 Workshop session

Where Next for Lottery Funding?

- 4.35 Plenary session
- 5.00 Close and depart

*Paper not submitted

ANNEX 5. SPEAKER AND WORKSHOP LEADER BIOGRAPHIES**Dr Kevin Bishop**

Senior Lecturer, Department of City and Regional Planning at Cardiff University

Dr. Kevin Bishop is a Senior Lecturer in the Department of City and Regional Planning at Cardiff University and Head of the Department's Environmental and Countryside Planning Unit. He is a qualified planner with over 12 years experience of research and policy work in the countryside. He is author of over 100 articles on countryside/environmental issues and has acted as advisor/consultant to such bodies as national park authorities, the Royal Commission on Environmental Pollution and the European Commission.

With his colleague Adrian Phillips he conducted a study (funded by the Economic and Social Research Council) into the impacts of the National Lottery on countryside conservation and recreation.

Chris Burke

Local Heritage Initiative Adviser, Countryside Agency

Chris Burke is the Local Heritage Initiative Adviser for all the counties in the South West of England. He works for the Countryside Agency and is based in Bristol. His job as adviser is to appraise new applications as they come in and prepare submissions of these proposals to the deciding panel of the Heritage Lottery Fund. He also promotes the Local Heritage Initiative throughout his region and manages the grants once offered.

Chris has worked in the environmental sector for over fifteen years and has five years experience of working on lottery funded projects first through the Millennium Commission and now the Heritage Lottery Fund.

Andrew Davis

Lottery Funding Officer, The Wildlife Trusts

Following four years working in industry as an engineer with Lever Brothers Andrew Davis studied for a MSc in Environmental Management. He spent eight years working for Groundwork in Cumbria as project development manager before joining The Wildlife Trusts

ANNEX 5. SPEAKER AND WORKSHOP LEADER BIOGRAPHIES

as their Lottery Funding Officer two years ago. He is responsible for supporting the 46 Wildlife Trusts in their applications to and relationships with the Lottery Boards. The Wildlife Trusts have benefited particularly from the support provided by the Heritage Lottery Fund for a wide range of projects.

Helen Earner

Policy Adviser, The New Opportunities Fund

Helen joined the New Opportunities Fund last summer as a Policy Adviser, leaving Merseyside Training and Enterprise Council after working as a Regeneration Partnership Development Officer for two years. Prior to this she worked as a Policy Adviser (Learning and Skills) for the Confederation of British Industry which she joined on completion of a Masters in Public Administration in 1998.

To date, Helen's principle responsibility at the Fund has been the Green Spaces and Sustainable Communities Programme, although recently she has begun to work on policy development for the third round of New Opportunities Fund programmes. Helen has worked with the Green Spaces and Sustainable Communities award partners to develop application materials.

Michael Goodenough

Waterway Manager, The Kennet & Avon Canal, British Waterways

Michael Goodenough is Waterway Manager for the Kennet & Avon Canal, part of British Waterways 2000 mile network of waterways around the country.

A Quantity Surveyor from the construction industry, Michael joined British Waterways in 1992 following the reopening by HM the Queen of the canal in Devizes in 1990, opening up the opportunity to navigate between Bristol and Reading for the first time in 40 years.

With the help of the Kennet & Avon Canal Trust and several local authorities, the canal had been restored during the past three decades to a point of through navigation. In order to secure its future, a considerable investment was needed and in 1994 Michael Goodenough,

ANNEX 5. SPEAKER AND WORKSHOP LEADER BIOGRAPHIES

as Project Manager, headed a team representing the Kennet & Avon Canal Partnership which submitted an application to the Heritage Lottery Fund for a £25 million grant to enable a £29 million six year programme of works to be undertaken.

Michael's role within British Waterways is as a general manager of a multi-disciplined business unit covering the operations, business development, leisure and tourism and customer support on the whole waterway between Bristol and Reading, comprising 104 locks, Sights of Special Scientific Interest, conservation areas and listed structures.

Michael is currently Project Director of the successful project, now in its fourth year, having completed £25 million of the £29 million overall project.

Phil Houghton

Senior Case Officer, Sport England

Phil Houghton has worked for Sport England since January 1997, originally as a Case Manager assessing capital applications and latterly as a Senior Case Manager for both capital & revenue programmes. Prior to working for Sport England his background was in Local Education Authorities.

Helen Jackson

Deputy Director (Research) Heritage Lottery Fund

Helen Jackson works as Deputy Director (Research) at the Heritage Lottery Fund, having previously been employed by the Fund as Policy Adviser (Access), and as an external Expert Adviser. She leads a team which supports HLF policy work across the museums, archives and libraries sectors, in addition to cross-sectoral policy work on access, education and social inclusion. Helen also has particular responsibility for HLF's research and evaluation programmes.

Helen joined the Heritage Lottery Fund in 1999 from a specialist tourism and leisure consultancy, where she worked on a wide range of projects, including cultural and heritage strategies, and lottery applications, assessments, and monitoring. Previous posts have

ANNEX 5. SPEAKER AND WORKSHOP LEADER BIOGRAPHIES

included Deputy Director of the South Eastern Museums Service, where Helen was also Regional Director of area museums council operations for Oxfordshire, Hampshire, the Isle of Wight, Buckinghamshire and Berkshire. Other employment experience includes strategic local government development as Policy Officer for Portsmouth City Council, and diverse museums management and social history curatorship appointments.

Helen's specialisms within the heritage field are policy development, strategic planning, marketing, access and equality issues. She is a Fellow of the Royal Society of Arts and Chair of Business in the Arts South, the lead body for arts and business relationships in Southern England. Helen's qualifications and study include a degree in Archaeology, the Diploma of the Museums Association, the Diploma in Management Studies, the Diploma of the Institute of Marketing, and study towards an MBA.

Pete Johnstone

National Project Manager, Doorstep Greens Initiative, Countryside Agency

Pete Johnstone has worked as a senior countryside officer for the Countryside Agency, and its predecessor the Countryside Commission, since 1993. Based in the East of England region he has covered work relating to recreation, rights of way, community forests, countryside management and external funding. Before joining the Countryside Commission, Pete was the project manager for the Lower Mole Countryside Management Project on the Surrey London fringe for seven years and before that he ran the London Schools and Community Project with BTCV.

Pete has recently become the National Project Manager for the Countryside Agency's Doorstep Greens initiative which is funded by the New Opportunities Fund under their Green Spaces and Sustainable Communities initiative.

Fflur Lawton

Senior Information Officer, The New Opportunities Fund, Wales.

Fflur joined the New Opportunities Fund in 1999 as a Senior Information Officer based in the Wales Country Office, Cardiff. To join the Fund, Fflur left the RSPB, for whom she

ANNEX 5. SPEAKER AND WORKSHOP LEADER BIOGRAPHIES

worked as an Environment Wales Development Officer. Prior to this Fflur was employed in the environment branch of the Prince's Trust which she joined having graduated from Sheffield University with a degree in Environmental Science. Fflur is a Welsh speaker and is from Aberystwyth. Fflur has a wide knowledge on the New Opportunities Funds programmes and has experience of the Fund's work to date in health, education and environment.

Mike McDonnell

Case Manager, Sport England

Mike McDonnell has been employed by Sport England since September 1999, his current role involves the processing and assessment of individual schemes submitted in application to the Sport England Lottery Sports Fund. This will be expanded to include applications submitted under the New Opportunities Fund's 'Playing Fields and Community Green Spaces' programme.

Prior to joining Sport England the majority of Mike's career was spent within the landscape industry, in both the commercial and public sectors. This included various positions with Landscape Architects, Local Authorities and Commercial Landscape Contractors. His responsibilities during this time included landscape environmental assessment, applied landscape contract procedures, recreational land use, and resource planning.

Iain Oag

Director, Yorkshire Dales Millennium Trust

Iain Oag is the Director of the Yorkshire Dales Millennium Trust, an independent environmental charity, which is nearing the completion of its £9 million EnviroNet project, assisted by a £4 million grant from the Millennium Commission. By the middle of 2001, 370 projects will have been undertaken in the Dales. These will have covered landscape, built, wildlife and community projects in almost every parish. The Trust hopes to follow this through a grant from the Heritage Lottery Fund for its 'Dales Living Landscape Project'.

Iain has a degree in Botany from Oxford University and in Brewing Science from Birmingham University and is a Trustee of the Royal Botanic Gardens, Kew and the Castle Howard Arboretum Trust.

ANNEX 5. SPEAKER AND WORKSHOP LEADER BIOGRAPHIES

Anna Orton

Policy Officer, Wales Office, National Lottery Charities Board.

Anna Orton is a Policy Officer at the Wales Office based in Newtown, Powys. Anna has been employed with the Board since August 1995, initially as a Grants Officer, assessing applications and managing grants awarded.

Since November 1999 her role changed to become the Policy Officer. This involves maintaining an overview of our grant giving, maintaining contact with the voluntary sector and helping to guide the future direction of the Board in Wales. She has previously worked in the voluntary sector and has a degree in Town and Country Planning.

Elaine Reynolds

Out of School Hours Learning Co-ordinator, Mountain Ash Comprehensive

Elaine Reynolds is the Out of School Hours Learning Co-ordinator of a project that successfully gained funding from the New Opportunities Fund in March 2000. Elaine's current role has grown from research she undertook whilst teaching.

Elaine was successful in gaining funding from GEST to research into absenteeism and attendance at Mountain Ash between 1990 and 1993. This led to further study into support available for key skills in maths and English at the school during 1993 and 1995. Elaine then completed some development work to link her findings, which ultimately led to the identification of the need for funding for out of school hours learning.

As well as co-ordinating the project, Elaine still teaches maths and maintains the close links she developed with the community whilst completing of her research. Elaine voluntarily agreed to be involved in the fundraising and lottery workshop and can provide insight on the New Opportunities Funds application processes from first hand experience.

ANNEX 5. SPEAKER AND WORKSHOP LEADER BIOGRAPHIES**Paul Richardson**

Senior Strategy & Statutory Services Manager, Sport England

Paul Richardson is the Senior Strategy & Statutory Services Manager at Sport England. After graduating with a B.A. Hons. in Politics (with Economics) in 1984 from the University of Liverpool, Paul joined British Waterways in the Leisure & Tourism Division.

After working for a period with British Waterways, Paul moved onto the Institute of Public Finance Ltd. (one of the commercial arms of the Chartered Institute of Public Finance & Accountancy) as a Researcher/Compiler. His role involved carrying out research and project work in public services including recreation, libraries, museums, and education.

In 1988 Paul joined the Lee Valley Regional Park Authority originally as Research Officer and then as Business Planning Manager. His main role was identifying and making funding bids from third parties. Other duties included carrying out project work and market and business research in relation to the leisure industry.

Paul re-joined British Waterways in 1997 to identify external funding sources, provide support and advice in making external funding bids, undertake economic benefit and leisure and tourism studies and to carry out external consultancy work on behalf of third parties.

In 1999 Paul joined Sport England where he is now responsible for the implementation of all aspects of Sport England's Lottery Strategy and for the management of the Lottery Units reporting function.

Jennifer Stewart

Manager for Wales, Heritage Lottery Fund

Jennifer Stewart began her career as an archaeologist in the Middle East and subsequently as a museum curator (Curator of Archaeology, Bristol City Museum). As Head of Documentation at the National Museum of Wales she also built up expertise in computerised documentation, and the use of new technology in the management and public access to museum collections. She joined the Heritage Lottery Fund as the HLF Manager for Wales in January 1999.

ANNEX 5. SPEAKER AND WORKSHOP LEADER BIOGRAPHIES**Nitin Thakrar***Consultant*

Nitin Thakrar has excellent knowledge and experience of the countryside. He completed a Postgraduate Diploma in Countryside Management. He has also worked for British Trust for Conservation Volunteers, the National Trust and British Waterways.

Nitin has been involved in fundraising for over five years. In January 2000 he left British Waterways to run his own consultancy in strategy and fundraising. He is now well established with a growing client list and working with national organisations.

Nitin has had a number of successes in raising funds from structural sources which include ERDF, ESF, Landfill Tax, central and local government and the National Lottery Distributors. His latest success was securing the HLF award for the Council for National Parks, 'Developing Links to the National Parks' project.

**ANNEX 5. 'FUNDRAISING AND THE LOTTERY'
DELEGATE LIST**

Title	Surname	Name	Position	Organisation
Mr	Barrett	Nick	Chief Executive	The Ramblers' Association
Mr	Biddleycombe	Kim		Heritage Lottery Fund, Wales
Dr	Bishop	Kevin	Senior Lecturer	Cardiff University
	Boden	Alison	Head Ranger	Wyre Countryside Service
Mr	Braund	Tim	Team Leader (Education & Interpretation)	Exmoor National Park Authority
Mr	Burke	Chris	South West Regional Advisor	The Countryside Agency
Mr	Butler	Richard	Countryside and Access Policy Manager	Devon County Council
Ms	Cartwright	Tansee	Community Action Officer	Middlesbrough County Borough Council
Mrs	Creaye-Griffin	Lisa	Countryside Estate Clientside Manager	Surrey County Council
Mr	Davis	Andrew	Lottery Funding Officer	Wiltshire Wildlife Trust
	Dean	Liz	Environmental Planner	Rhondda Cynon Taff CBC
Mr	Dixon	Tim	Head Warden	East Dorset District Council
Ms	Earner	Helen	Policy Officer	New Opportunities Fund
Mr	Finch	Paul	EU and External Funding Officer	Forestry Commission in Wales
Mr	Flanagan	John	Wessex Fundraising Manager	The National Trust
Mr	Fox	Richard	Upland Paths Officer	Lake District National Parks Authority
Dr	Gay	Honor	People and Wildlife Manager	The Wildlife Trusts (UK Office)
Mr	Gerhardsen	Karl		North York Moors NPA
Mr	Gilchrist	James	Outdoor Amenities Officer	Powys County Council
Ms	Gladwin	Anne	Middlesbrough Access Project Officer	Middlesbrough County Borough Council
Mr	Goodenough	Michael	Waterway Manager	British Waterways
Mr	Greason-Walker	Adrian	Marketing Officer	RSPB Cymru
Miss	Gunningham	Kim	Policy Officer	DETR
Ms	Hayward	Siobhan	Development Worker	Black Environment Network
Mr	Houghton	Phil	Senior Case Officer	Sport England Lottery Fund
Mr	Hughes	Elwyn	Countryside Recreation Manager	Carmarthenshire County Council
Ms	Jackson	Helen	Deputy Director (Research)	Heritage Lottery Fund

**ANNEX 5. 'FUNDRAISING AND THE LOTTERY'
DELEGATE LIST**

Title	Surname	Name	Position	Organisation
Mr	Johnstone	Pete	National Project Manager	The Countryside Agency
Miss	Kenyon	Christine	Head of Visitor Services	Lake District National Park Authority
Mr	Lauder	Ian	Fundraising Director	Wey & Arun Canal Trust
	Lawton	Fflur		New Opportunities Fund, Wales
Mrs	Lewis-Smith	Nicola	Development Manager	British Waterways
Mrs	Little	Vivienne	Trust and Grants Co-ordinator	The National Trust
Mr	Luscombe	Russell	External Resources & Project Dev. Officer	Dartmoor National Park Authority
Mr	Maeer	Gareth	Economic Analyst	British Waterways
Mr	Maginnis	Matt	Countryside Business Manager	Worcs County Council - Countryside Service
Mr	Manning	David		Worcestershire County Council
Mr	McDonnell	Mike	Case Officer	Sport England Lottery Fund
Mr	Melville	Ronald	Community Forestry Programme Advisor	Forestry Commission
Mrs	Milligan	June	Head of Countryside Division	National Assembly for Wales
Mr	Mills	Paul	Fundraising and Projects Officer	Shropshire Union Canal Society
Ms	Munday	Emma	Recreation Manager	Forest Enterprise
Mrs	Murtagh	Sue	Countryside Strategy and Partnerships Co-ordinator.	Bath & NE Somerset Council
Mr	Oag	Iain	Director	Yorkshire Dales Millenium Trust
Mrs	Orton	Anna	Policy Officer, Wales	National Lottery Charities Board
	Reynolds	Elaine		Mountain Ash Comprehensive School
Mr	Richards	Paul	Principal Countryside and Heritage Officer	Flintshire County Council
Mr	Richards	Dennis	Managing Director	Sealyham Activity Centre Ltd
Mr	Richardson	Paul	Senior Strategy and Statutory Services Manager	Sport England Lottery Fund
Mr	Russell	Tony	Special Projects Executive	Forest Enterprise
Mr	Saunders	Robert	Ecopark Project Leader	Bristol Zoo
Mr	Scoffin	Steve	Countryside Recreation Officer	Stockton-on-Tees Borough Council
Miss	Sinclair	Sophie	Fundraiser	Council for National Parks

**ANNEX 5. 'FUNDRAISING AND THE LOTTERY'
DELEGATE LIST**

Title	Surname	Name	Position	Organisation
Mr	Smith	Andrew	Forest District Manager	Forestry Commission
	Standen	Elaine	Finance Manager	Brecon Beacons NPA
Mr	Stevenson	Alan	Head of Env. & Com.	Forestry Commission
Ms	Stewart	Jennifer	HLF Manager for Wales	Heritage Lottery Fund
Miss	Sword	Nicola	Senior Ranger, Acton	London Borough of Ealing
Mr	Tanner	Steve	Funding and Communications Officer	Groundwork Oldham and Rochdale
Mr	Taylor	Stuart	FER Manager	Environment Agency
Mr	Telling	Jack	Treasurer	Cotswold Canals Trust
Mr	Thakrar	Nitin	Fundraising Consultant	
Mr	Thomas	Emyr	External Funding Officer	Countryside Council for Wales
Ms	Thomas	Vicky	Senior Ranger	Devon County Council
Dr	Tilling	Stephen	Director of Communications	Field Studies Council
Mr	Trotter	Stephen	Property Manager	The National Trust
Mr	Venus	Colin	Chairman	Shropshire Union Canal Society
Mr	Watkins	John	Recreation Access Policy Officer	Countryside Council for Wales
Mr	Watt	Malcolm	Countryside and Conservation Manager	Cotswold District Council
Miss	Webb	Justine	Fundraising Manager	The National Trust
Mr	West	Mike	National External Funding Advisor	Environment Agency
Miss	White	Heather	Countryside Research Assistant	Bracknell Forest Borough Council
Mr	Williams	Craig	Information Officer	Warwickshire County Council
Mr	Woodruff	Chris	Assistant AONB Officer	Lancashire County Council
	Wright	Yvonne	Countryside Officer	Merthyr Tydfil County Borough Council
Mr	Young	Jon	Recreation Officer	Brecon Beacons National Park Authority