

Outdoor Recreation Network – 11.10.18

# Community Planning in NI & access to greenspace .....is there a revolution happening?

Johnny McBride



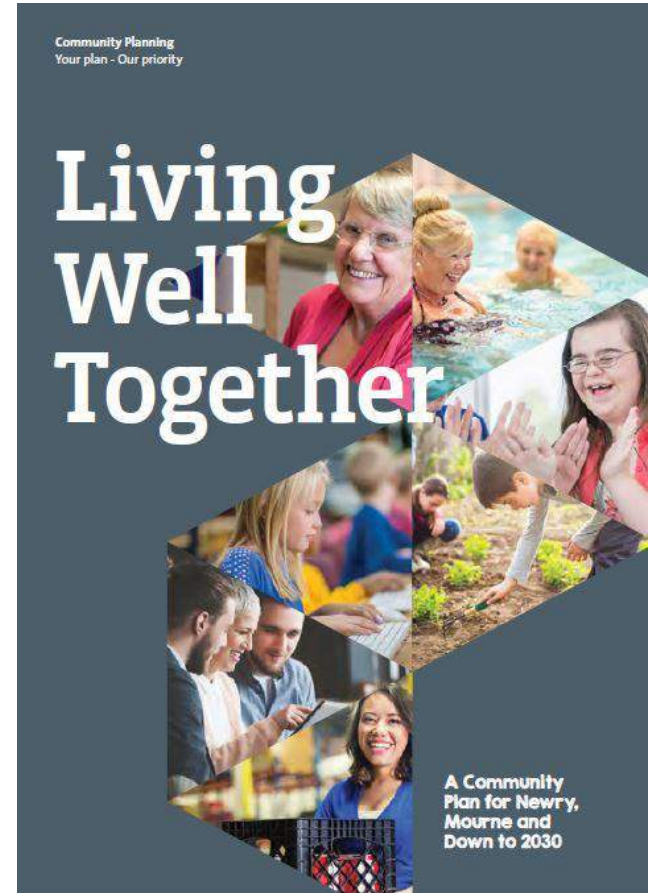
Comhairle Ceantair  
**an Iúir, Mhúrn  
agus an Dúin**

**Newry, Mourne  
and Down**  
District Council

Ag freastal ar an Dúin agus Ard Mhacha Theas  
Serving Down and South Armagh

# Outline

- Background & key drivers
- An intro to Newry, Mourne & Down
- Opportunities & challenges presented by greenspace
- Some final observations

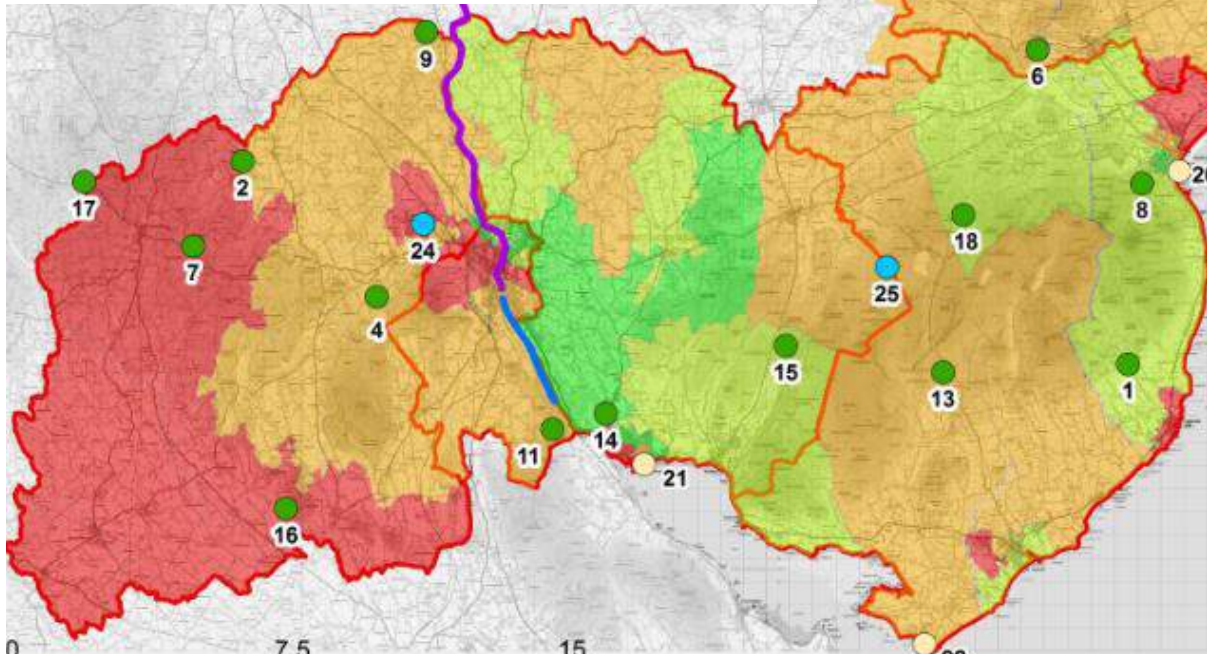
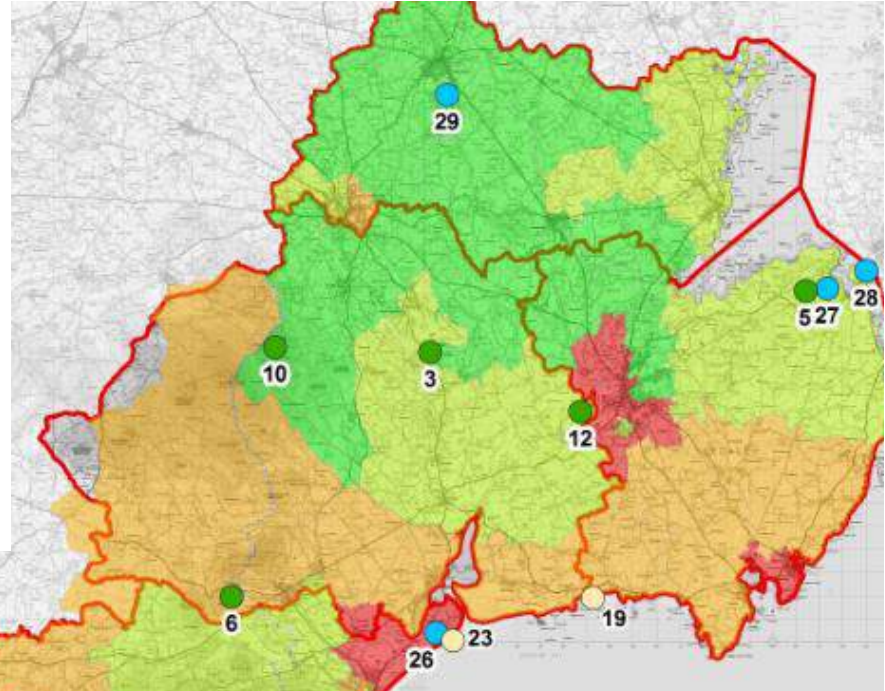
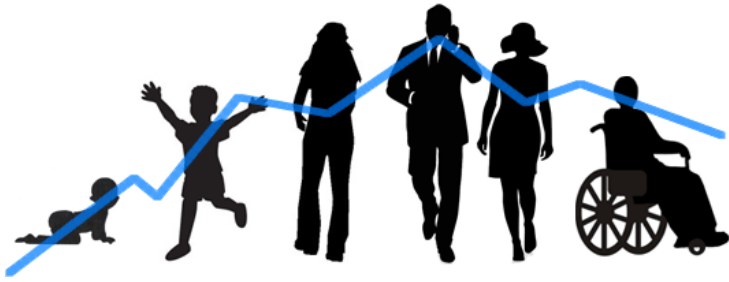


# Background & key drivers



**EVIDENCE**





**Focus** on health  
inequalities



Just some of our amazing greenspaces.....



**No real social change has ever been brought about without a revolution... revolution is but thought carried into action.**

Emma Goldman



# Thank you

E: johnny.mcbride@nmandd.org

T: 0300 013 2233

M: 07958728151

#livingwelltogether

Ag freastal ar an Dún agus Ard Mhacha Theas  
Serving Down and South Armagh



Comhairle Ceantair  
an Iúir, Mhúrn  
agus an Dúin

**Newry, Mourne  
and Down**  
District Council



# Community Trail Planning

## Case study - Newry, Mourne & Down District Council

Clare Jones, Head of Projects

October 2018



# What are Community Trails?

Formal trails that connect –

- Communities to local outdoor spaces
- Different communities together
- Integral part of community life

Includes -

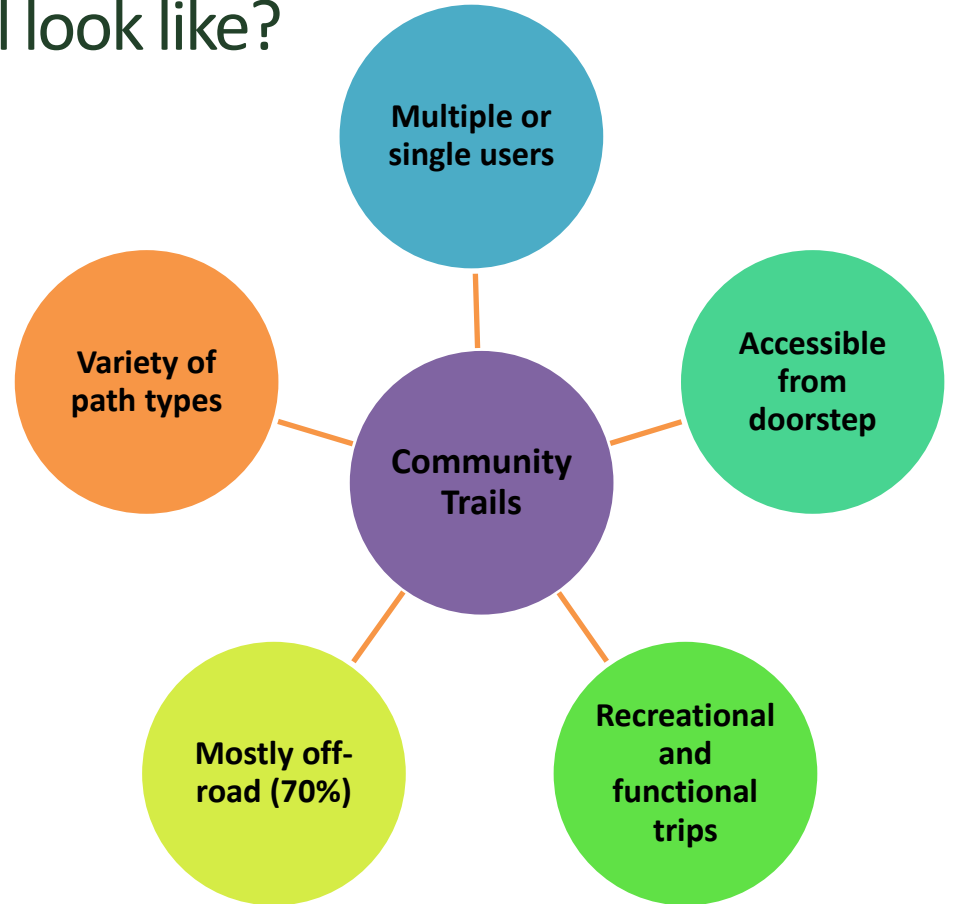
- Linear or looped trail
- Site based trail systems – Community Trail Hubs

Community Trails link together to create –

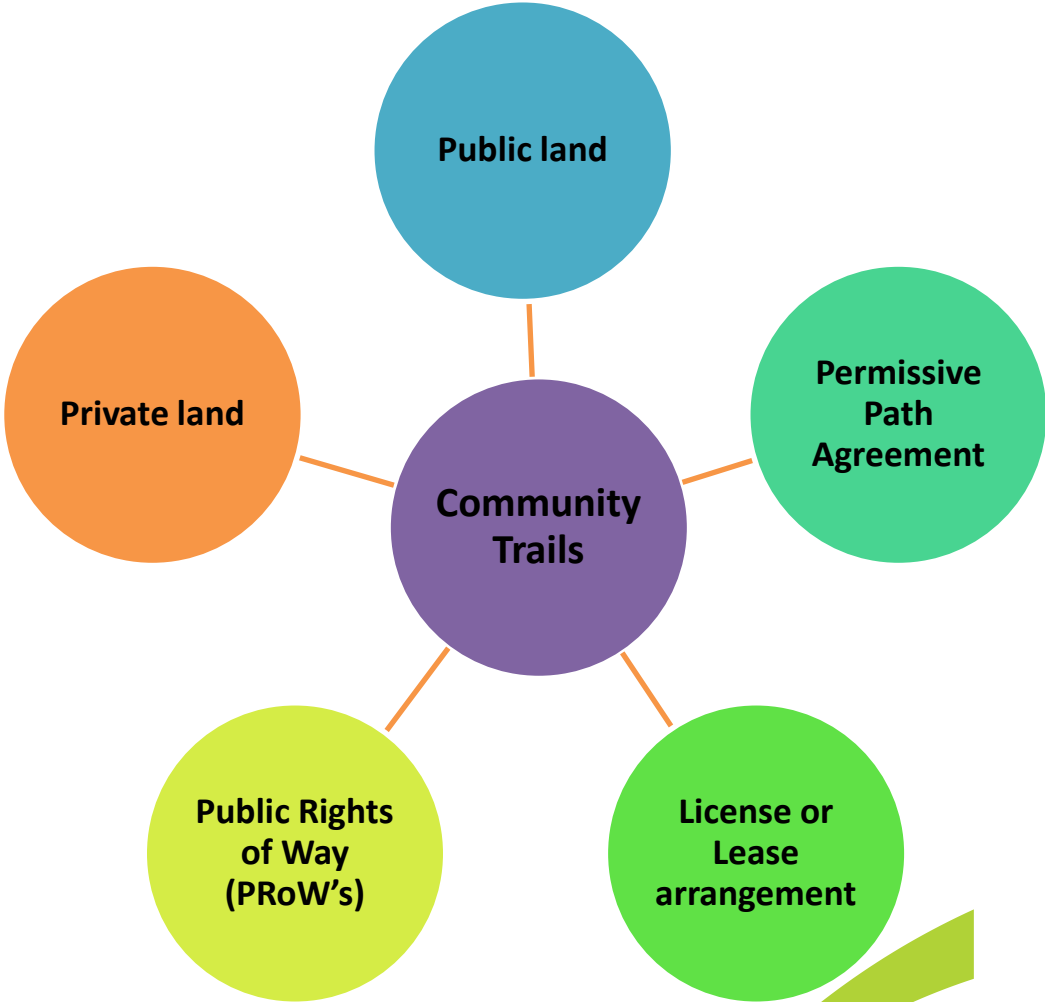
- A Community Trail Network



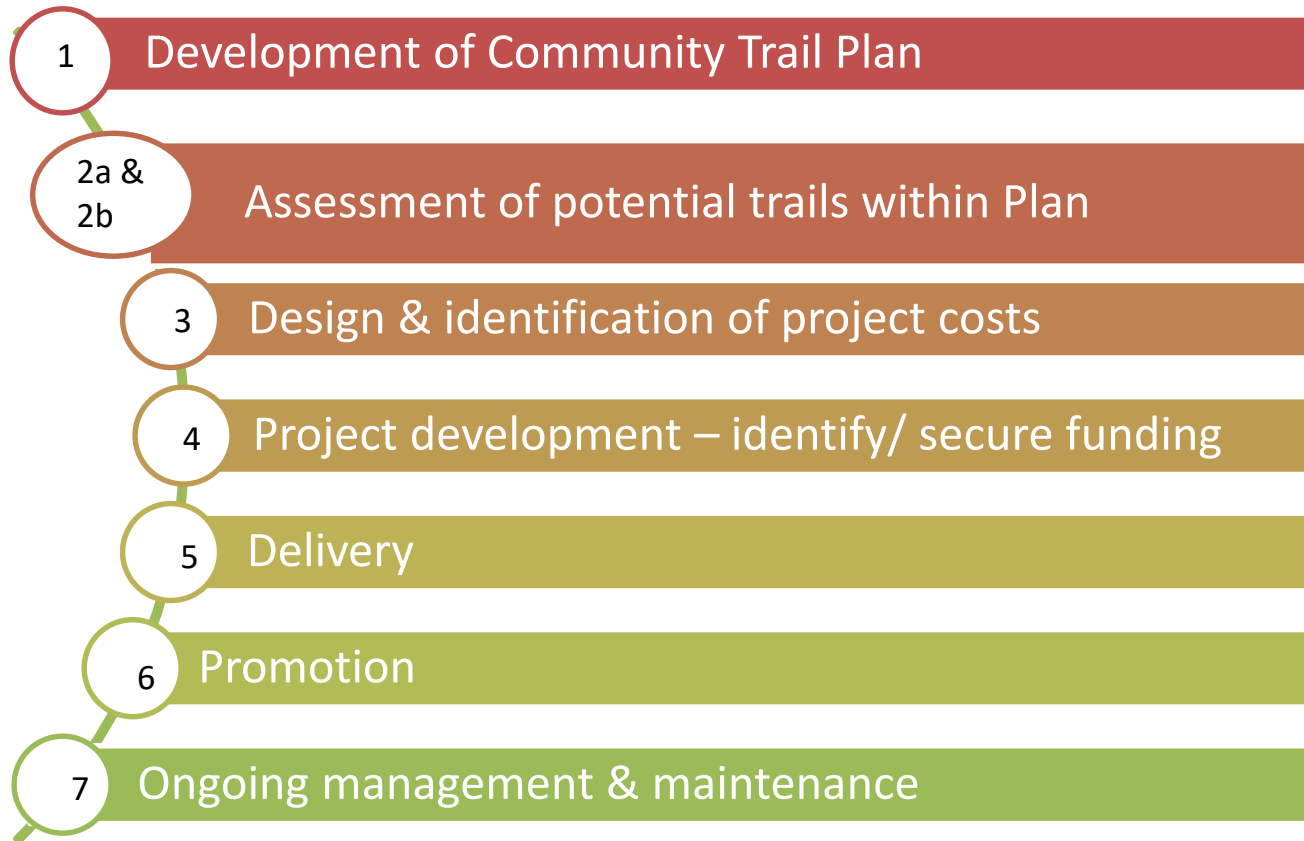
# What does a Community Trail look like?

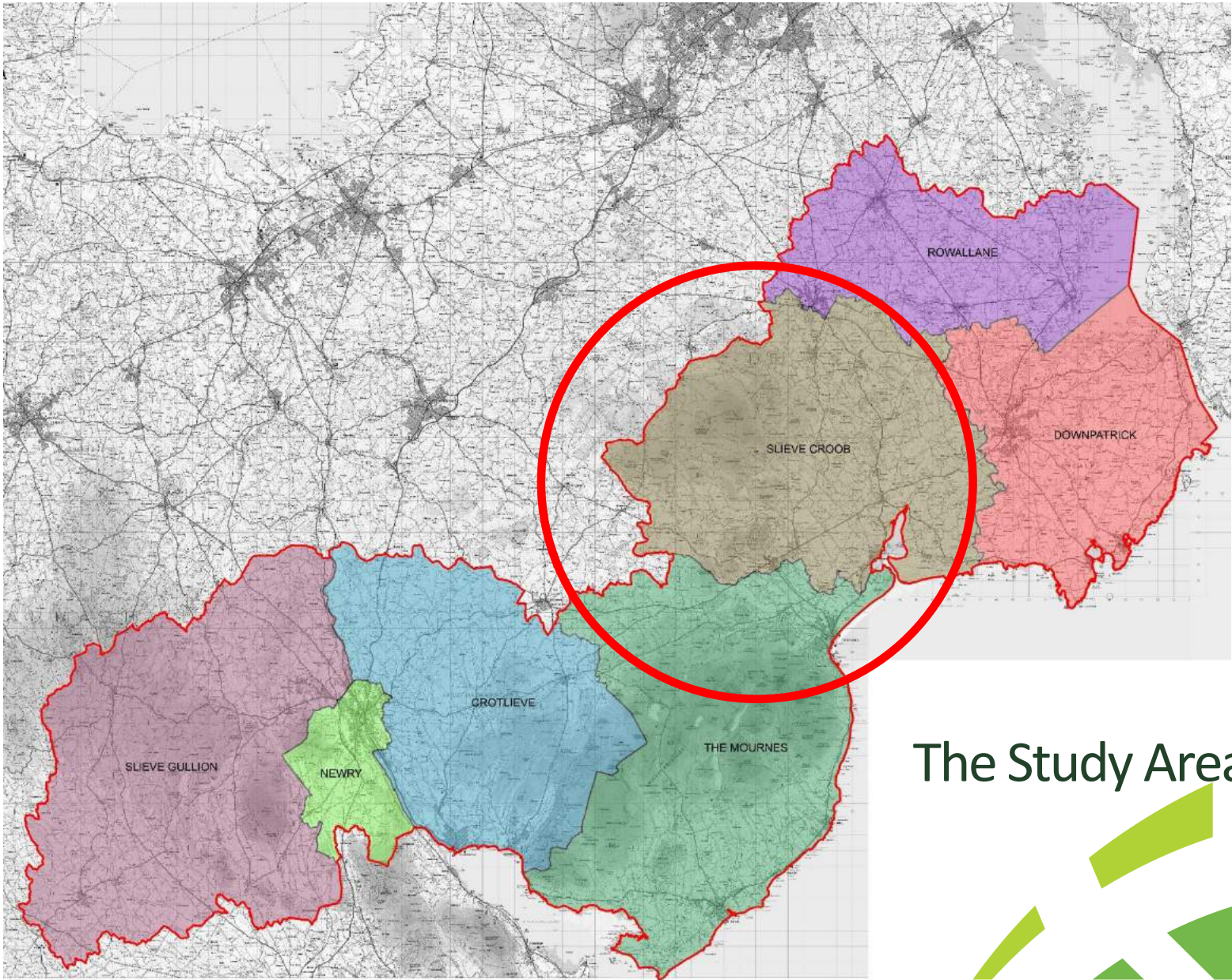


Must be freely accessible to the public..

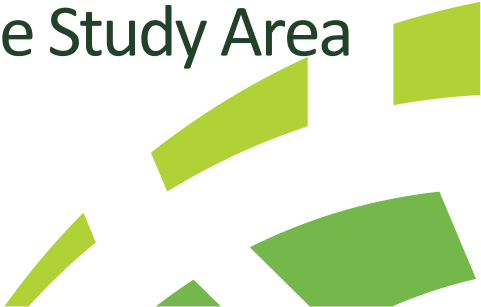


# Community Trail Planning - 7 stage process





The Study Area

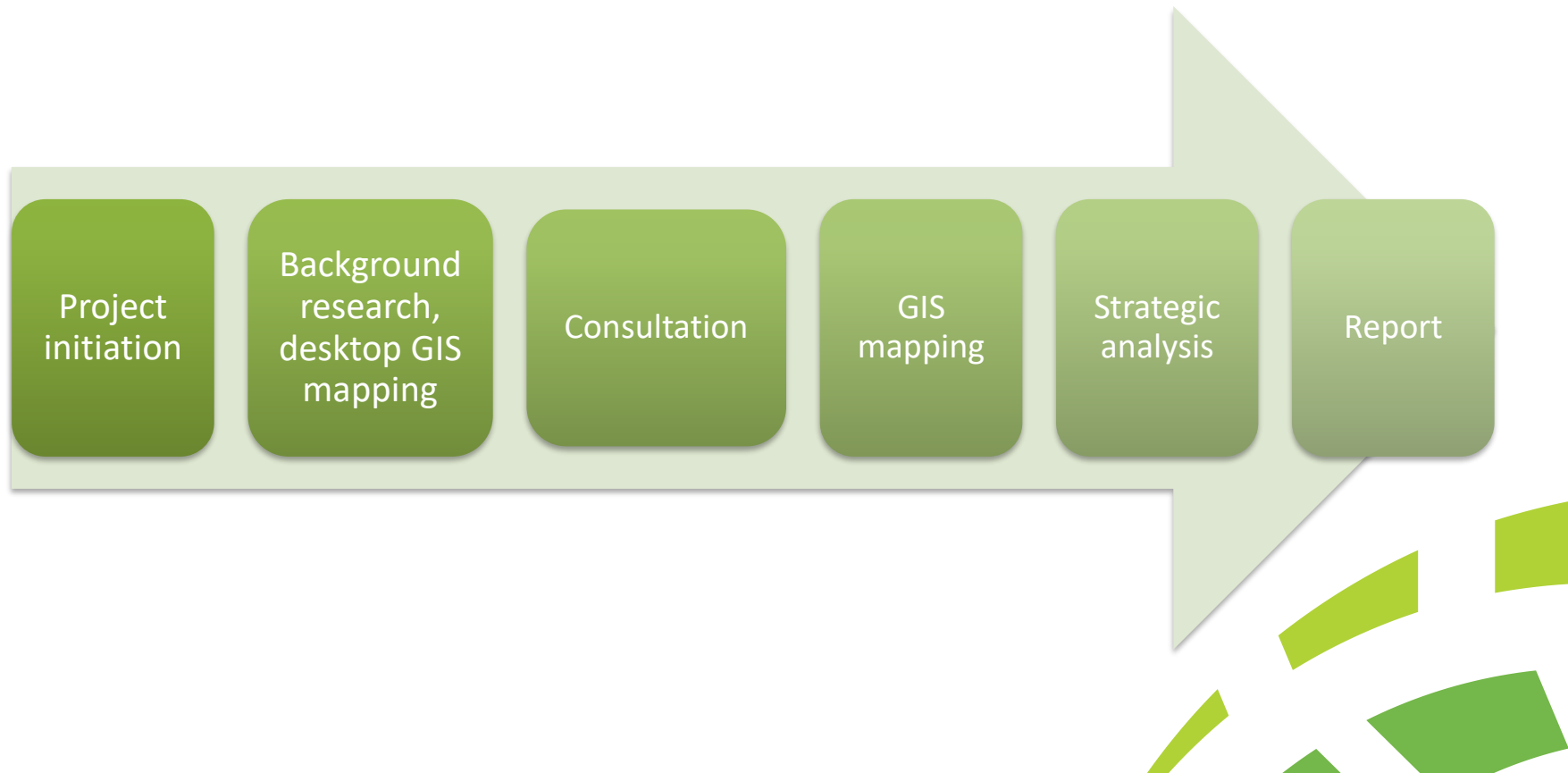


*“A successful Community Trail should be an integral part of community life”*

- Where are these trails?
- If they do exist, how do we identify them?
- If they don't exist, where could they be developed?
- How do we ensure they have potential to become integral to community life?



# Development of a Community Trail Plan - Methodology





# Slieve Croob District Electoral Area (DEA)

- 17 settlements
- Numerous community groups
- Village plans
- Other interested groups/ individuals
- Huge process of gathering information

Settlement No.	Settlement Name
014	Annacloy
015	Annadorn
016	Annsborough
017	Ballykinlar
018	Ballyward
019	Castlewellan incl. Burrenbridge
020	Clonvaraghan
021	Clough
022	Drumaness
023	Drumaroad
024	Dundrum
025	Finnis
026	Leitrim
027	Loughinisland
028	Maghera
029	Seaforde
030	Spa

## Identification of -

- Current provision
- Gaps in current provision
- Barriers to development – landownership, resources, perceptions etc.
- Potential new community trails – closed PRow's, alleged PRow's, permissive paths
- Priorities for future development
- Produced a Community Trail Plan



# Community Trail Plan in place - next steps?

*Easy work done - hard work now begins!*

- Long list of potential community trails mapped
- Site visits had not taken place
- Rationalisation – apply key criteria
  - Is there a local demand?
  - Is landowner permission in place or likely to be put in place in short term?

Produced for each settlement

- Summary document with associated maps



# Review summary document

For each settlement community led approach-

- Site visits
- Consultation with key community representative(s)
  - Are these the right trails and trail hubs?
  - Identify local demand - Which are the most useful for daily lives?
  - Have we missed any?
  - History of use/ blockages?
  - What are the barriers in moving forward?
  - Identification of landowners
- Rationalise with Council Officers
  - History and local knowledge



*\*\*\* If agreement from landowner not likely to be obtained then trail does not progress*

## Slieve Croob DEA – potential linear Community Trails

- 69 potential trails mapped
- Connecting communities to services & facilities e.g. shops, bus stops, sports pitches
- Connecting communities to ‘trail hubs’
- Desire for looped walks taking users off road
- Alleged & asserted PROW’s (some open, some closed, some disputed)
- New access opportunities on private land
- Working with communities/ Council to progress



# Slieve Croob DEA – potential Trail Hubs

- 7 hubs identified
- Access secure
  - Forest Service NI (FSNI) sites
  - Private forests leased to FSNI
  - Private land – new access
  - Private land – enhanced access
- Trail Design complete
- Funding secured for development
- Formal access agreements being put in place
- Trail Hubs to be open by summer 2019



## Other elements -

Development of a trail management model to include –

- Management requirements e.g. inspections
- Maintenance requirements
- Insurance
- Resources required to implement – staff, volunteers, revenue budget



## Key learnings -

- Huge support among communities for community trails
  - Difficult to estimate staff time - resource intensive process, each trail requires detailed review
  - Communities need hand holding
    - Difficulties in understanding access legal framework
    - How to maintain motivation/ interest among communities
    - Local sensitivities - reluctance to progress access with neighbours
  - Consistency among delivery staff crucial for communities
    - To build trust
    - Develop relationships
- 



Thank you

[clare@outdoorrecreationni.com](mailto:clare@outdoorrecreationni.com)

