

# **Llwybr Arfordir Cymru a'i effaith ar y dreftadaeth naturiol a hanesyddol**

**The Wales Coast Path and its impact on the natural and historic  
heritage**

**Elinor Gwynn  
Cyfoeth Naturiol Cymru/Natural Resources Wales**





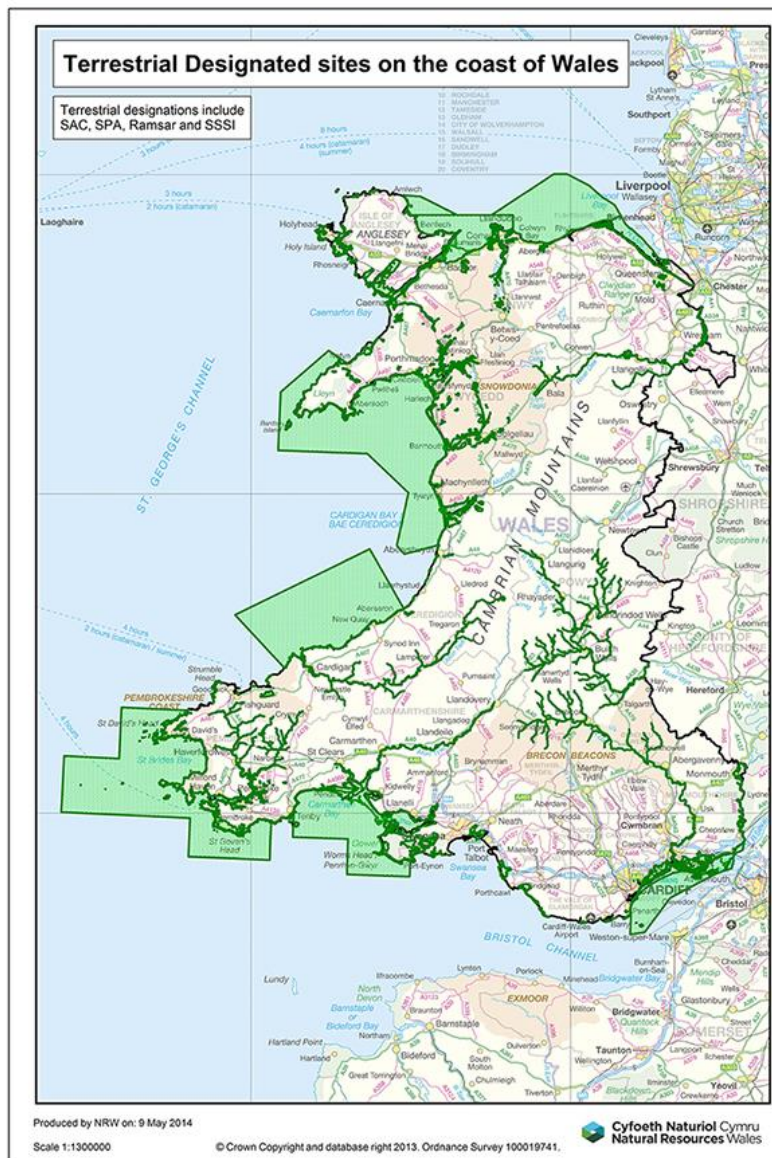
**Cyfoeth  
Naturiol  
Cymru  
Natural  
Resources  
Wales**

# WCP Objectives

- 
- A photograph of a coastal landscape. In the foreground, there are lush green hills with a small white building. The hills lead down to a rocky coastline and a sandy beach. The sea is visible in the distance under a cloudy sky.
- i. Improve access for local communities and visitors.**
  - ii. Improve access for less able visitors and families.**
  - iii. New opportunities for cyclists and horse riders at coast.**
  - iv. Maximise links with existing infrastructure and areas of open access land**
  - v. Deliver a good quality all-Wales coastal path**

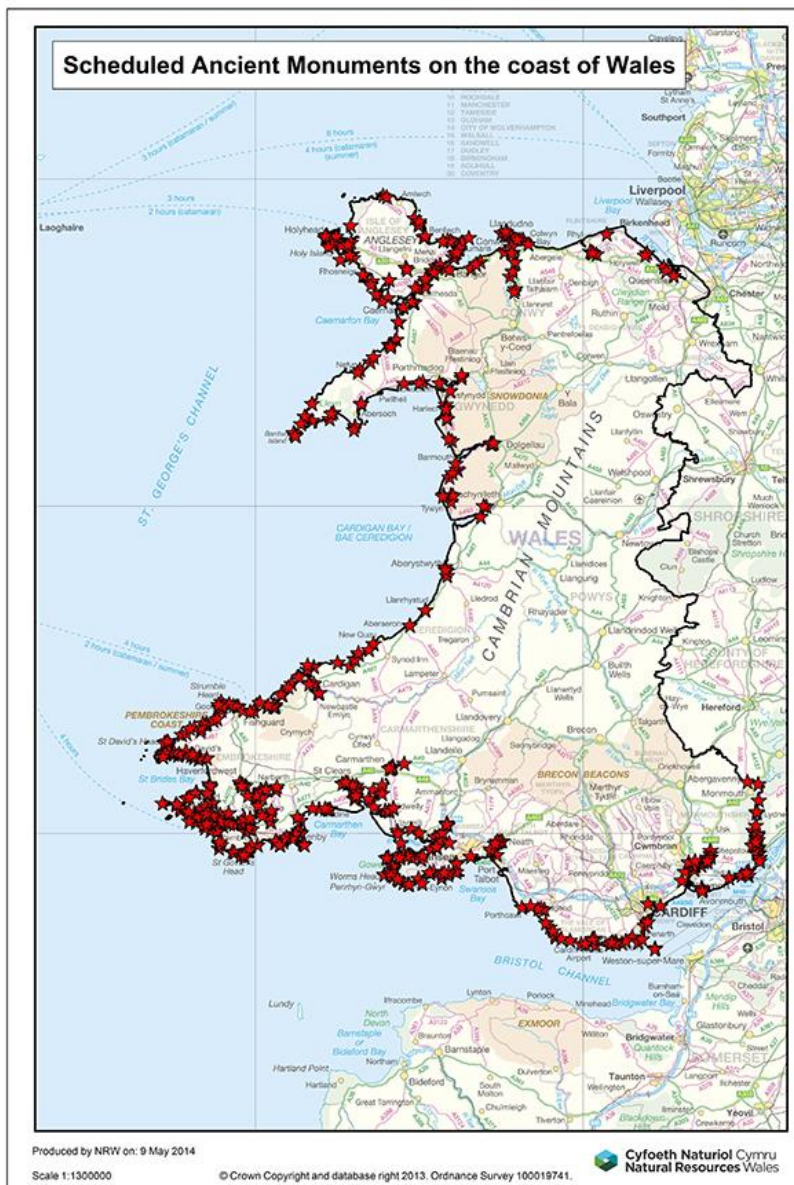


Cyfoeth  
Naturiol  
Cymru  
Natural  
Resources  
Wales





Cyfoeth  
Naturiol  
Cymru  
Natural  
Resources  
Wales







Cyfoeth  
Naturiol  
Cymru  
Natural  
Resources  
Wales

Destruction

**Missed  
opportunities**

**Abandonment**

Disturbance





# Where are we today?

**2011-2013**

- **870 miles continuous path**
- **60 miles alternative routes**
- **2.82 million visitors**
- **£32 million gross expenditure**
- **28.2 new FTE created**

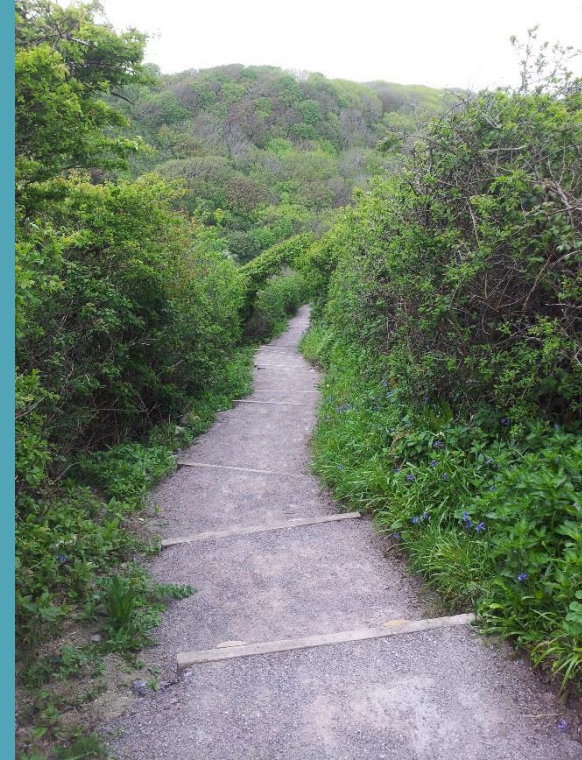






Cyfoeth  
Naturiol  
Cymru  
Natural  
Resources  
Wales

# Unfounded fears?







**Cyfoeth  
Naturiol  
Cymru**  
**Natural  
Resources  
Wales**

# Sense of place – whose place?







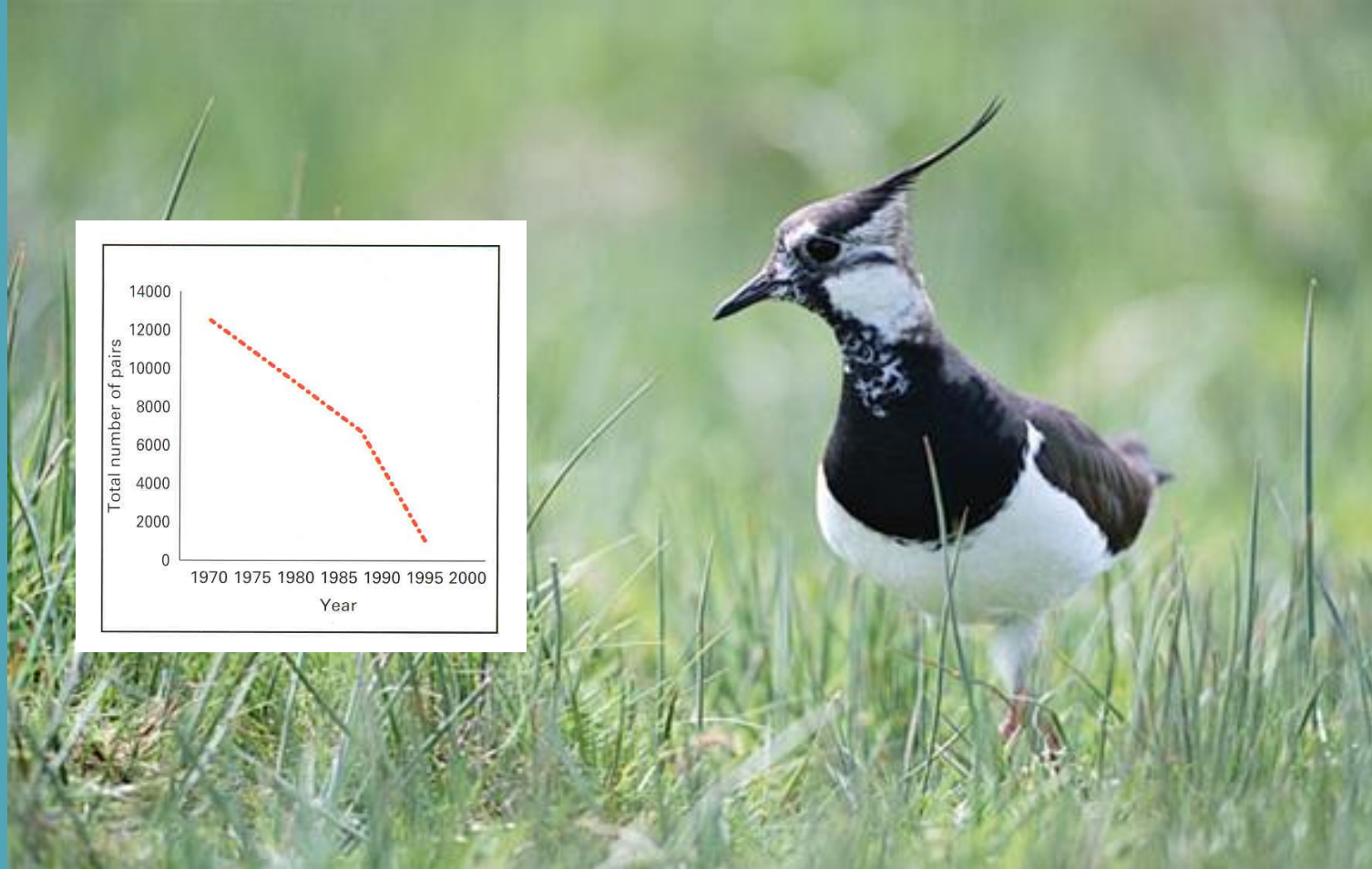
Cyfoeth  
Naturiol  
Cymru  
Natural  
Resources  
Wales

# Nature v Nature





**Cyfoeth  
Naturiol**  
Cymru  
**Natural  
Resources**  
Wales

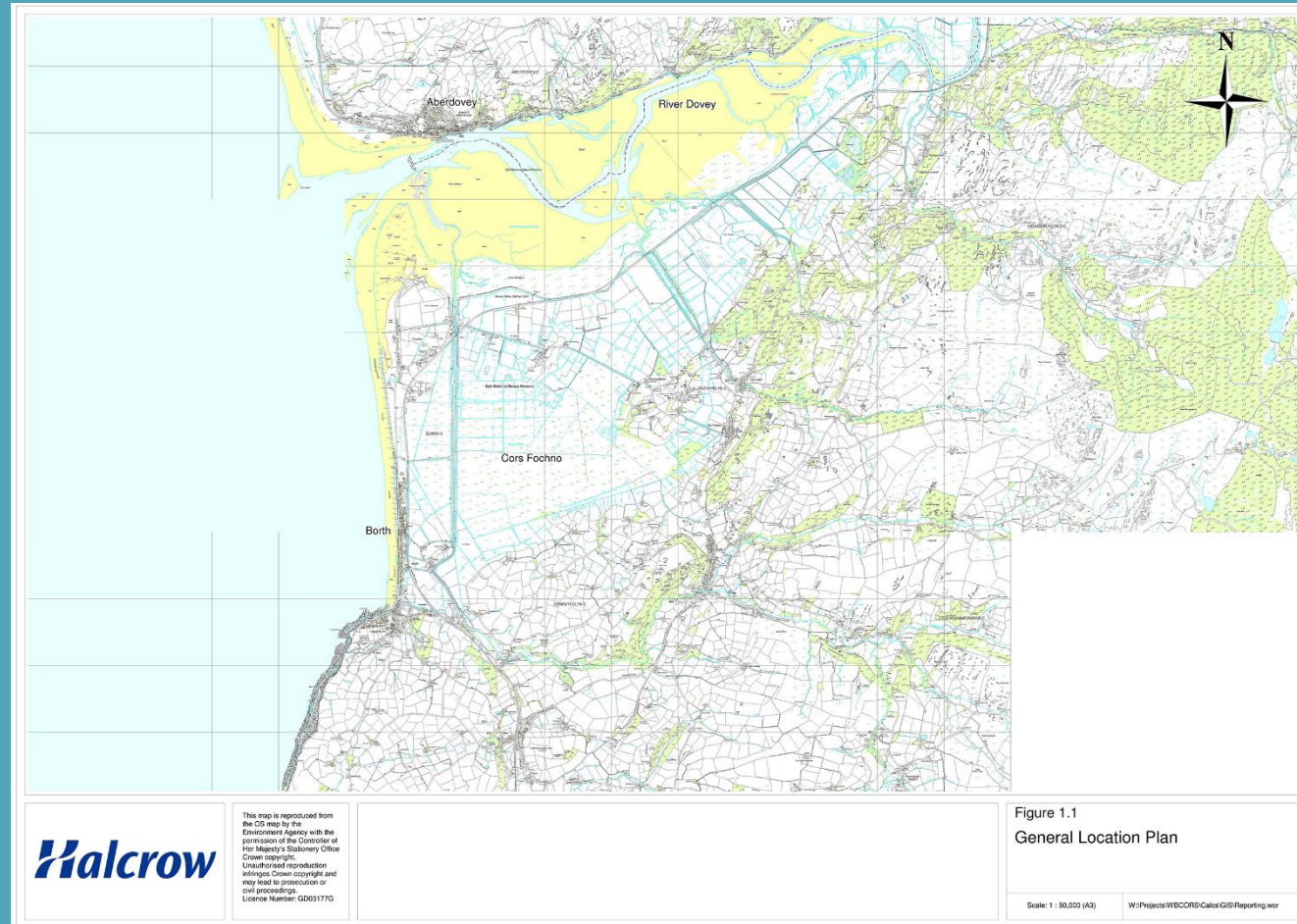


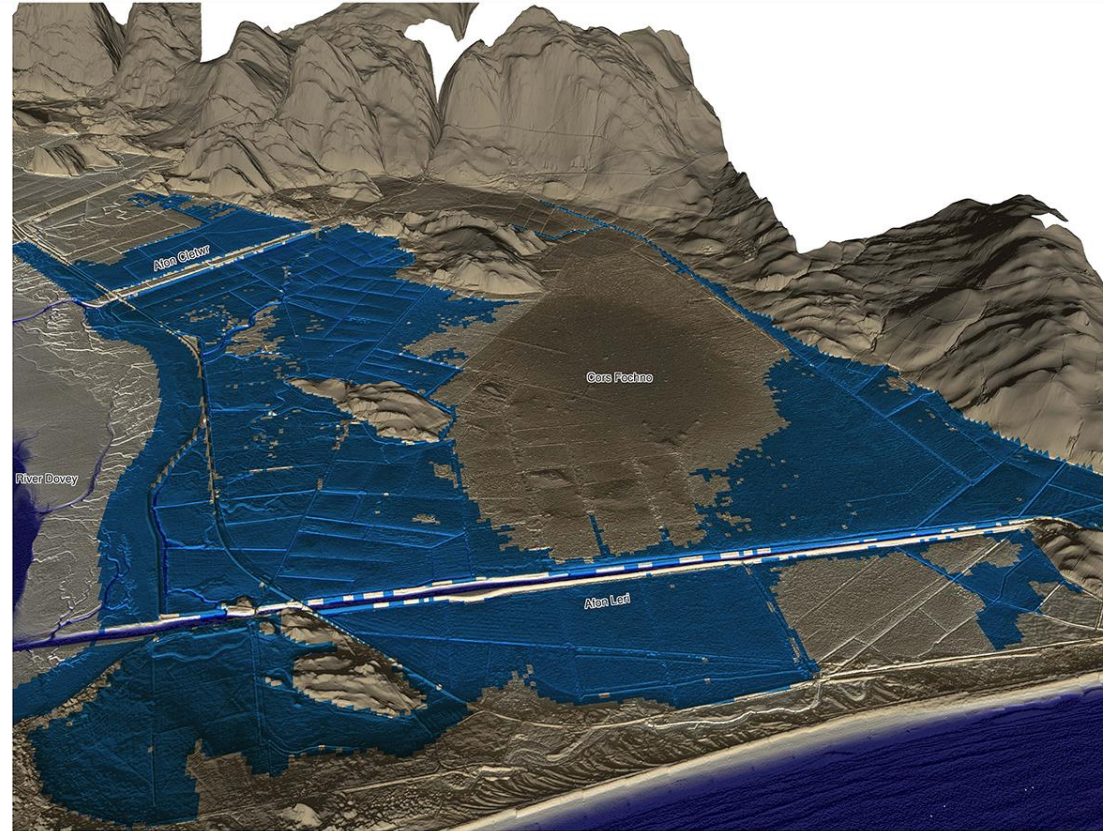




Cyfoeth  
Naturiol  
Cymru  
Natural  
Resources  
Wales

# Facing up to the future





This map is reproduced from the OS map by the Environment Agency with the permission of the Controller of Her Majesty's Stationery Office Crown copyright. Unauthorized reproduction infringes Crown copyright and may lead to prosecution or civil proceedings. Licence Number: GD00177G

Existing Scenario 6

Fluvial Event: MAF  
Tidal Event: 100 Year

Figure 4.2  
Perspective View  
Scenario 6

Scale: NTS

W:\Projects\WBCORS\Calc\GIS\Reporting\wcr





Cyfo  
Natu  
Cym  
Natu  
Reso  
Wale

# Sharing the load, sharing the riches

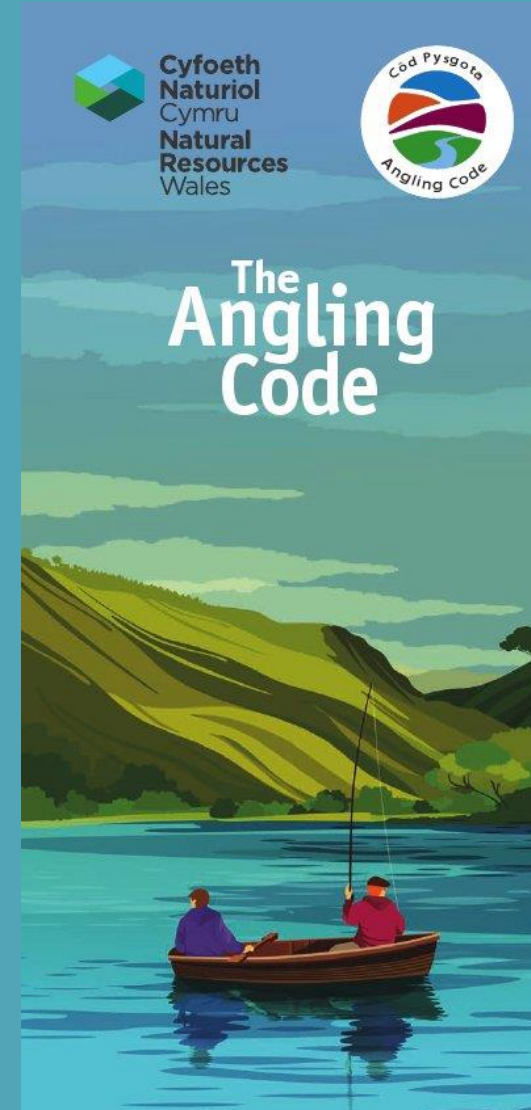
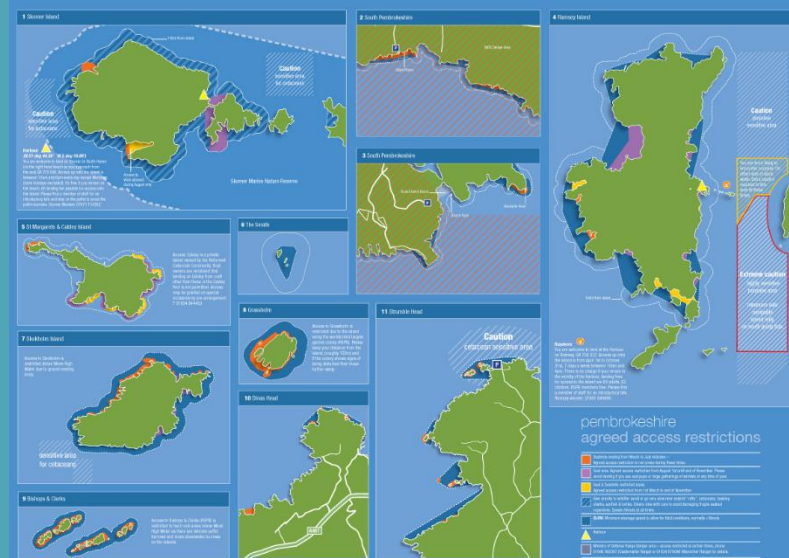






**Cyfoeth  
Naturiol  
Cymru  
Natural  
Resources  
Wales**

# Managing use, promoting good care



### Introduction

The Pembrokeshire Coast National Park has some of the most beautiful and diverse coastal scenery in the UK. It is an area rich in wildlife and natural beauty. It is also an area of great importance for the marine life that lives in its waters. The Pembrokeshire Coast National Park is a special place and we want to help you enjoy it in the best way possible.

### seals

We are very fortunate to share our waters with grey seals. They are wonderful in abundance and are protected by law. They feed on fish and shellfish and are an important part of the marine food chain. They are also a popular attraction for visitors to the coast. It is important that we all do our bit to protect them and their habitat.

- 1 Do not feed seals. Feeding seals can make them aggressive and dependent on humans. It can also make them lose their natural fear of humans.
- 2 Do not touch seals. Seals have sensitive skin and can be easily injured. Touching seals can also spread disease.
- 3 Do not approach seals. Seals are wild animals and can be unpredictable. Approaching seals can stress them and make them aggressive.
- 4 Do not leave your dog near seals. Dogs can scare seals and make them aggressive. If you have a dog, it should be kept on a lead and away from seals.
- 5 Do not litter. Litter can be harmful to seals and their habitat. Please take your litter home with you.
- 6 Do not smoke. Smoking is harmful to seals and their habitat. Please do not smoke in areas where seals are present.

### seabirds

The seabirds of Pembrokeshire are a special sight. They are beautiful and diverse and are an important part of the marine food chain. They are also a popular attraction for visitors to the coast. It is important that we all do our bit to protect them and their habitat.

- 1 Do not feed seabirds. Feeding seabirds can make them aggressive and dependent on humans. It can also make them lose their natural fear of humans.
- 2 Do not touch seabirds. Seabirds have sensitive skin and can be easily injured. Touching seabirds can also spread disease.
- 3 Do not approach seabirds. Seabirds are wild animals and can be unpredictable. Approaching seabirds can stress them and make them aggressive.
- 4 Do not leave your dog near seabirds. Dogs can scare seabirds and make them aggressive. If you have a dog, it should be kept on a lead and away from seabirds.
- 5 Do not litter. Litter can be harmful to seabirds and their habitat. Please take your litter home with you.
- 6 Do not smoke. Smoking is harmful to seabirds and their habitat. Please do not smoke in areas where seabirds are present.

### cetaceans

Porpoises, dolphins and whales share their waters with us. They are wonderful in abundance and are protected by law. They are also a popular attraction for visitors to the coast. It is important that we all do our bit to protect them and their habitat.

- 1 Do not feed cetaceans. Feeding cetaceans can make them aggressive and dependent on humans. It can also make them lose their natural fear of humans.
- 2 Do not touch cetaceans. Cetaceans have sensitive skin and can be easily injured. Touching cetaceans can also spread disease.
- 3 Do not approach cetaceans. Cetaceans are wild animals and can be unpredictable. Approaching cetaceans can stress them and make them aggressive.
- 4 Do not leave your dog near cetaceans. Dogs can scare cetaceans and make them aggressive. If you have a dog, it should be kept on a lead and away from cetaceans.
- 5 Do not litter. Litter can be harmful to cetaceans and their habitat. Please take your litter home with you.
- 6 Do not smoke. Smoking is harmful to cetaceans and their habitat. Please do not smoke in areas where cetaceans are present.

### useful contacts

**to report disturbance in wildlife contact**

Marine Code Officer: 01323 490005  
 Pembrokeshire Marine Code: 01323 490006

**useful contacts**

Welsh Coastguard: 01323 144100  
 Pembrokeshire Coastguard: 01323 144100  
 South Pembrokeshire Coastguard: 01323 144100  
 Herring Island Coastguard: 01323 144100  
 Gwynedd Coastguard: 01323 144100  
 The Marine Conservation Society: 01323 490005  
 The Marine Conservation Society: 01323 490006  
 The Marine Conservation Society: 01323 490007  
 The Marine Conservation Society: 01323 490008  
 The Marine Conservation Society: 01323 490009  
 The Marine Conservation Society: 01323 490010  
 The Marine Conservation Society: 01323 490011  
 The Marine Conservation Society: 01323 490012  
 The Marine Conservation Society: 01323 490013  
 The Marine Conservation Society: 01323 490014  
 The Marine Conservation Society: 01323 490015  
 The Marine Conservation Society: 01323 490016  
 The Marine Conservation Society: 01323 490017  
 The Marine Conservation Society: 01323 490018  
 The Marine Conservation Society: 01323 490019  
 The Marine Conservation Society: 01323 490020

**in an Emergency contact Coastguard on 999**





Cyfoeth  
Naturiol  
Cymru  
Natural  
Resources  
Wales

# Connecting and Inspiring



“  
*Nature doesn't discriminate  
between people - it provides  
opportunities for people to get  
together to achieve great things.*”

Defra (with ODPM, English Nature and the Local Government Association) 2004.





Cyfoeth  
Naturiol  
Cymru  
Natural  
Resources  
Wales

