

Langdale & Fylingdales Moor fire 2025: Experience, Challenges & Lessons

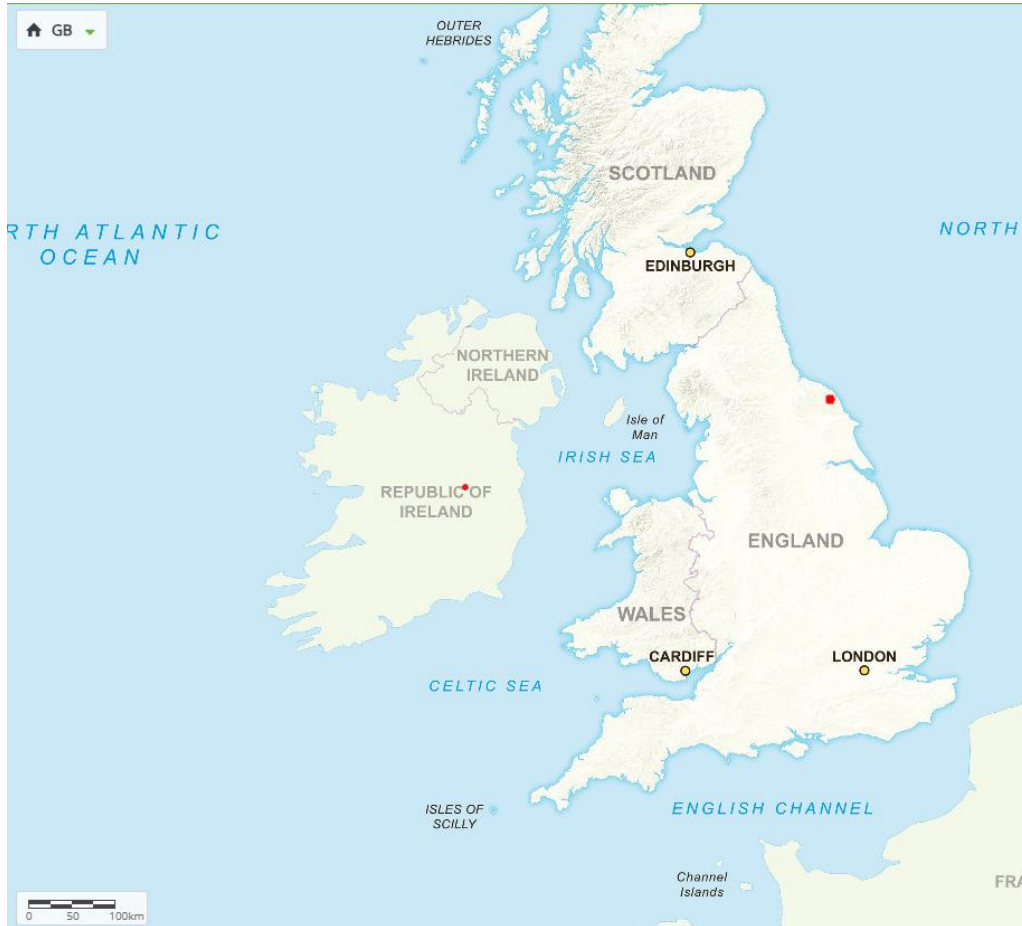
Gareth Parry – Director Yorkshire

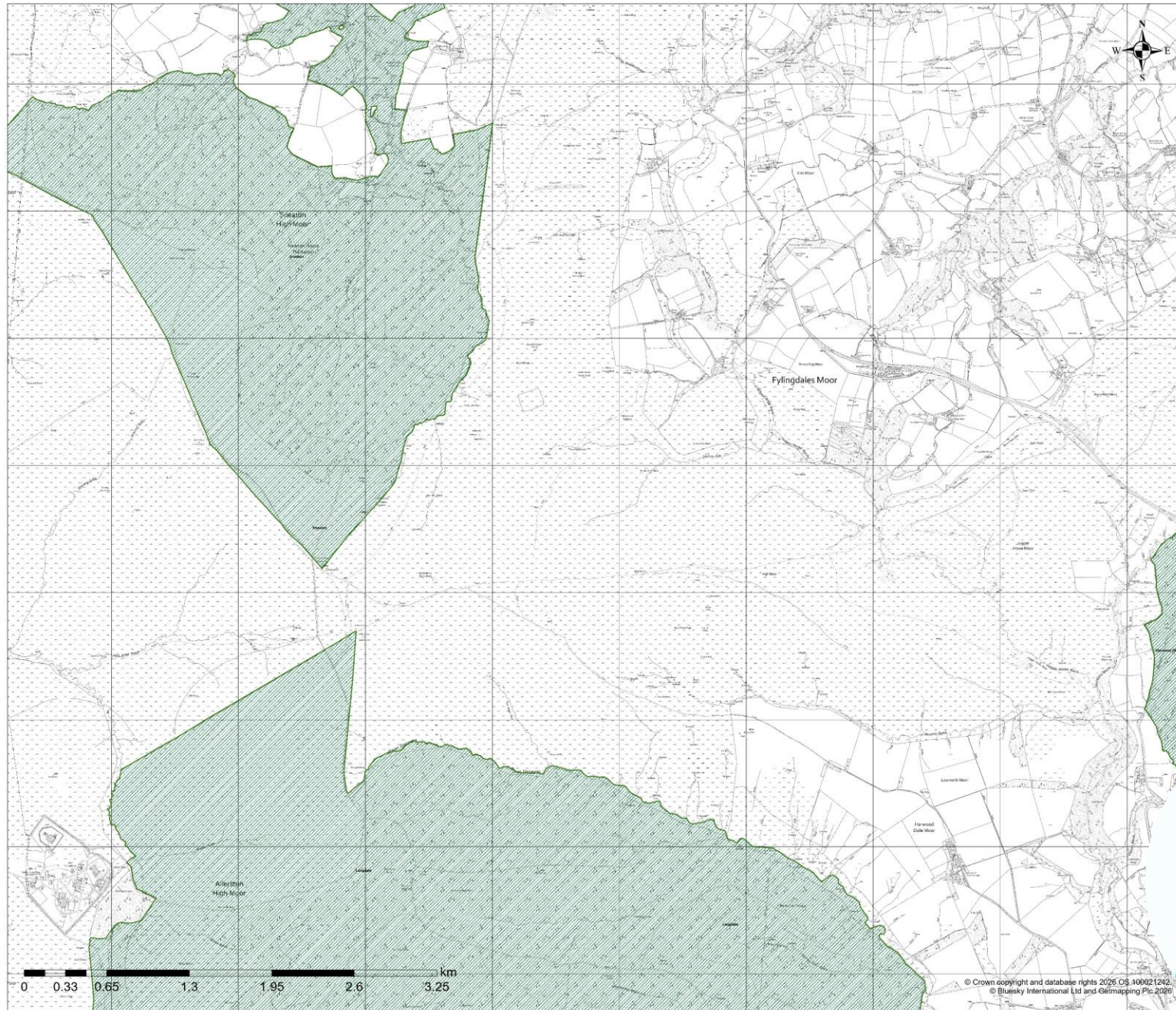


We are Forestry England

We are the country's largest land manager, caring for the nation's forests for people, nature and the economy. The foundation of our organisation is our world-class sustainable management of the nation's forests.



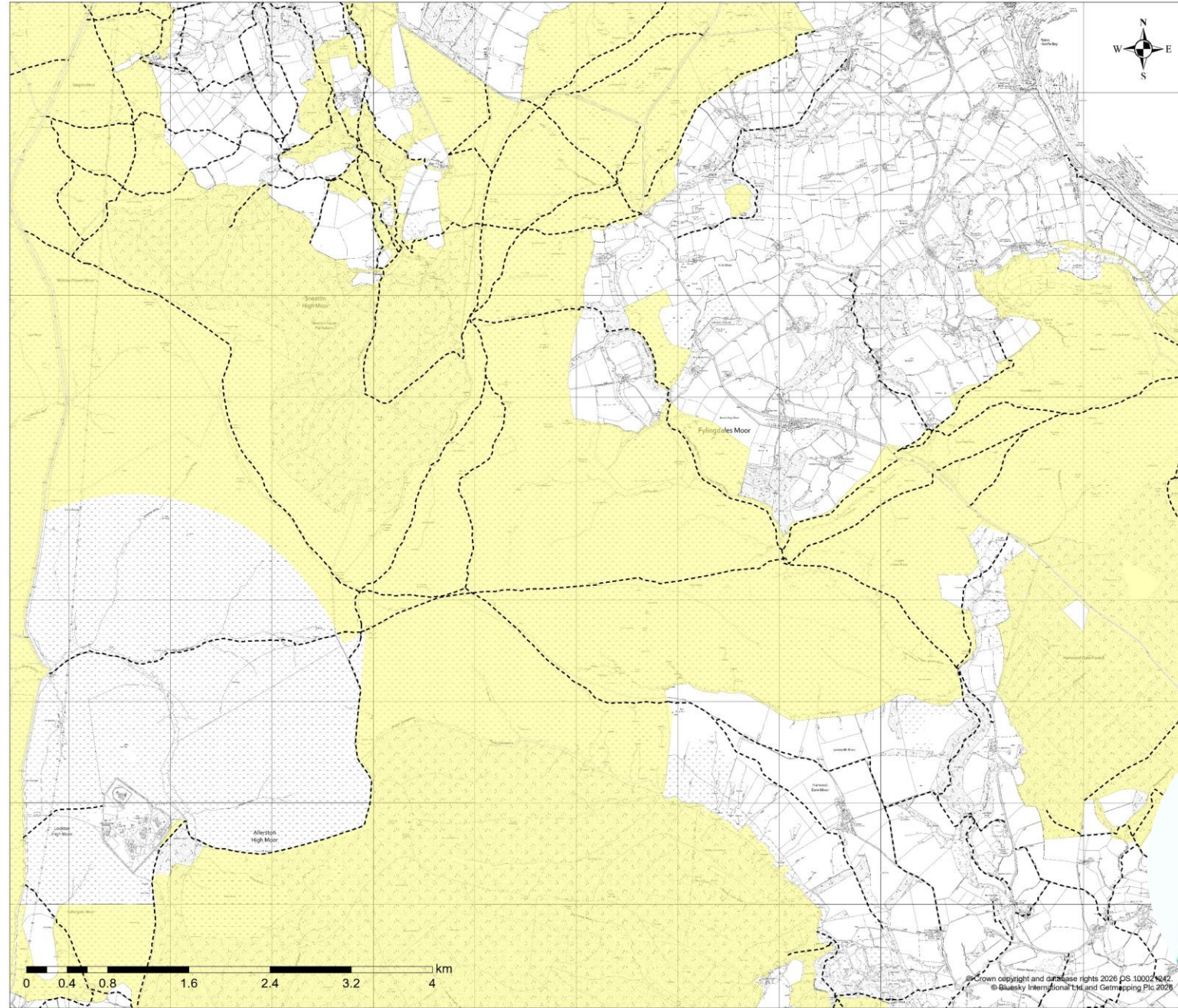




Title: Fylingdales moor
Date: 1 May 2026
Author: Gareth Parry
Scale @ A0: 1:10,000

 National Parks
 Woods

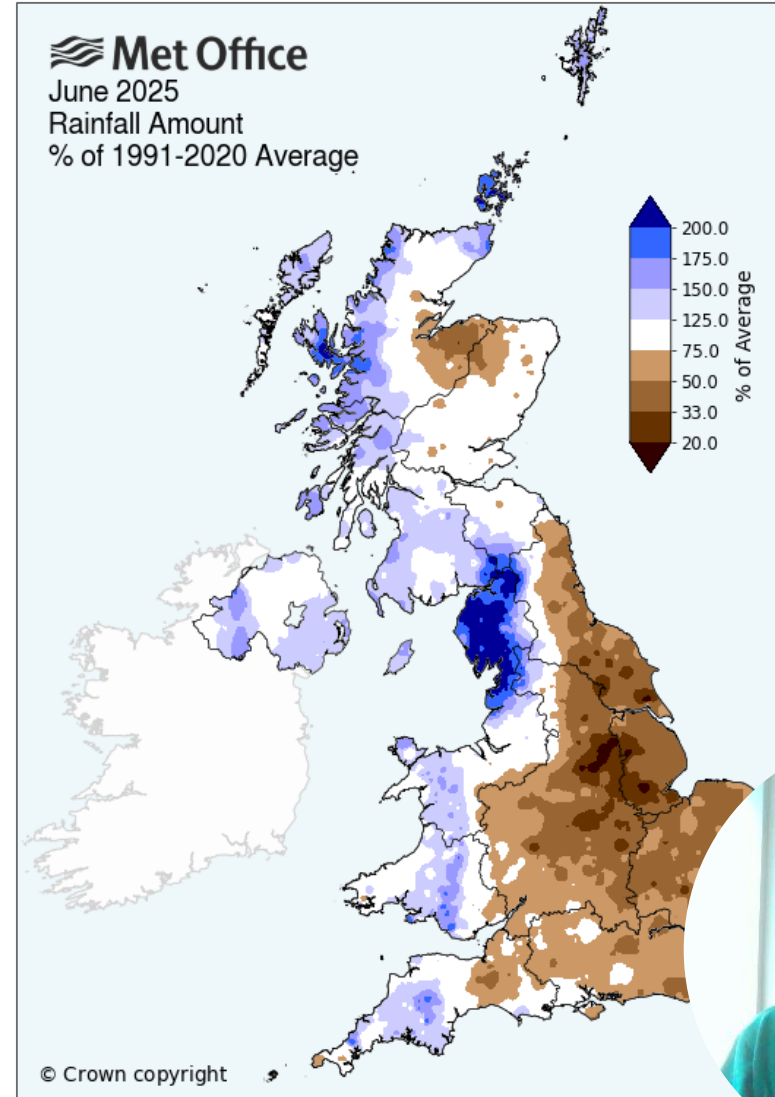
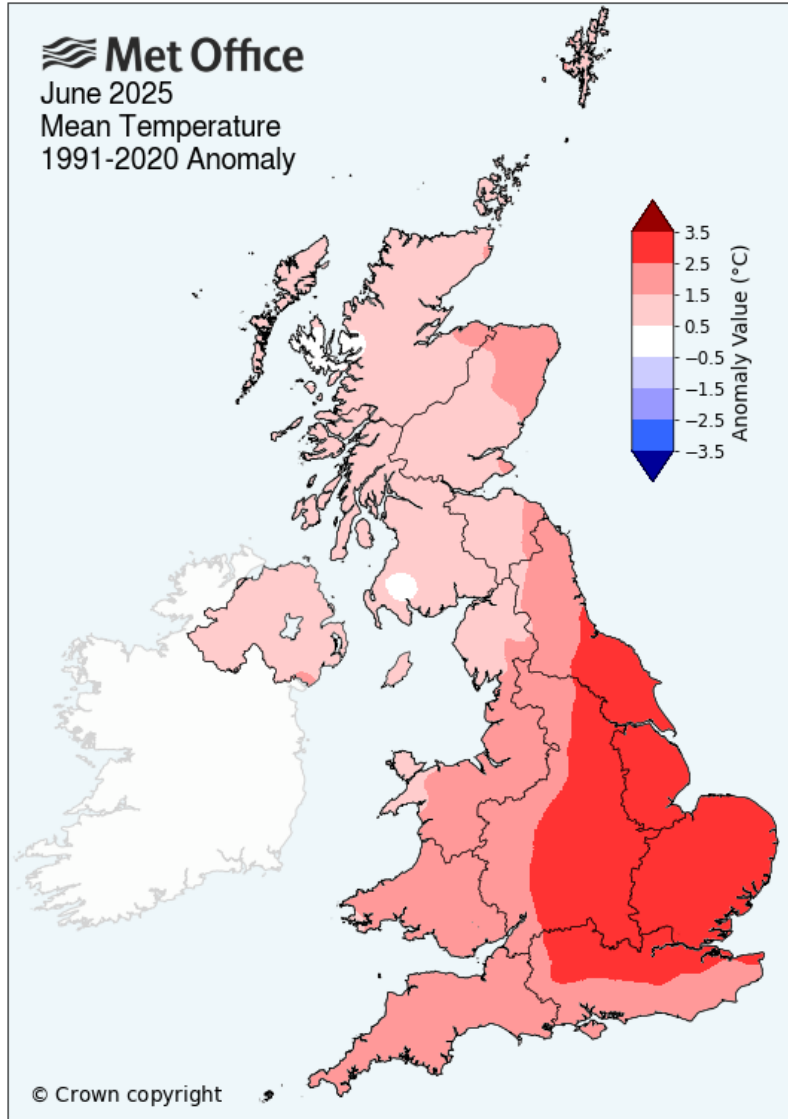




Title: Fylingdales moor
Date: 1 May 2026
Author: Gareth Parry
Scale @ A0: 1:12,500

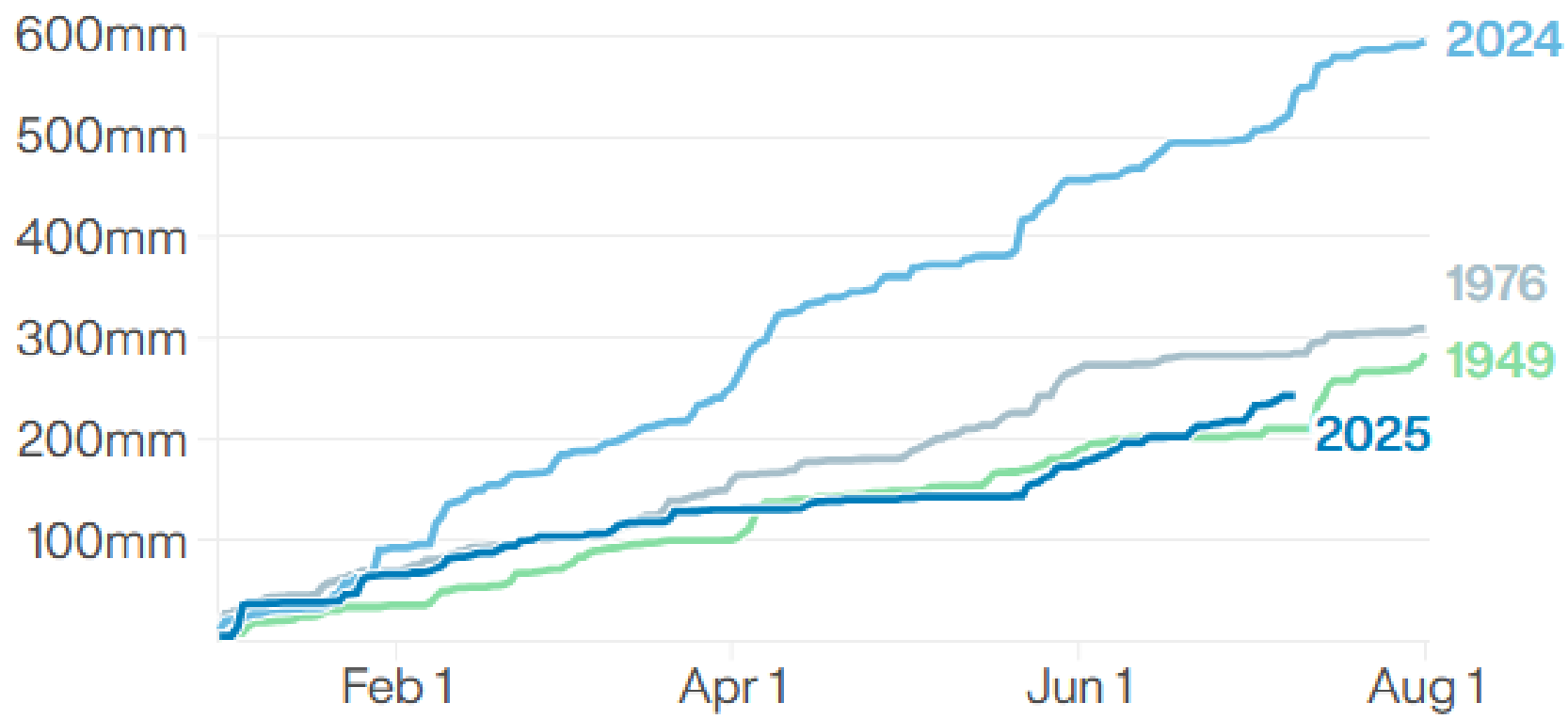
--- Public Rights of Way (PrW)
--- (Ordnance Survey)
■ Access Lane





Rainfall in Yorkshire & north-east England

(cumulative total)





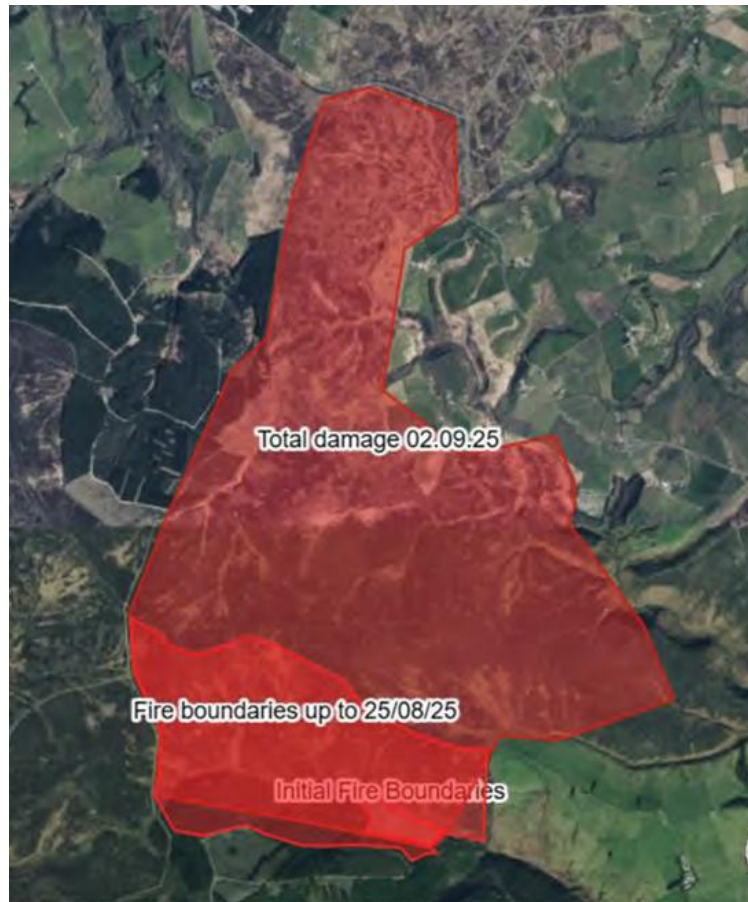
Photos - North Yorkshire Fire and Rescue Service

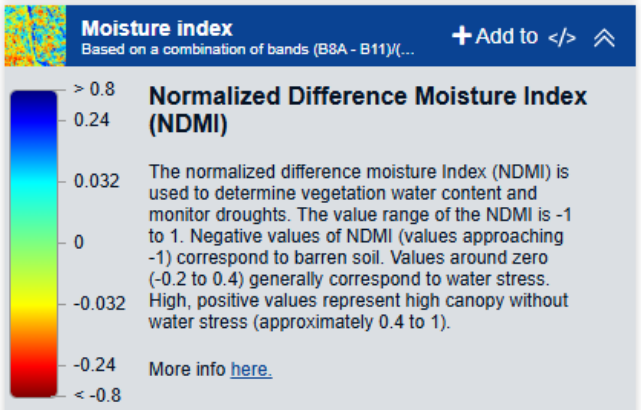
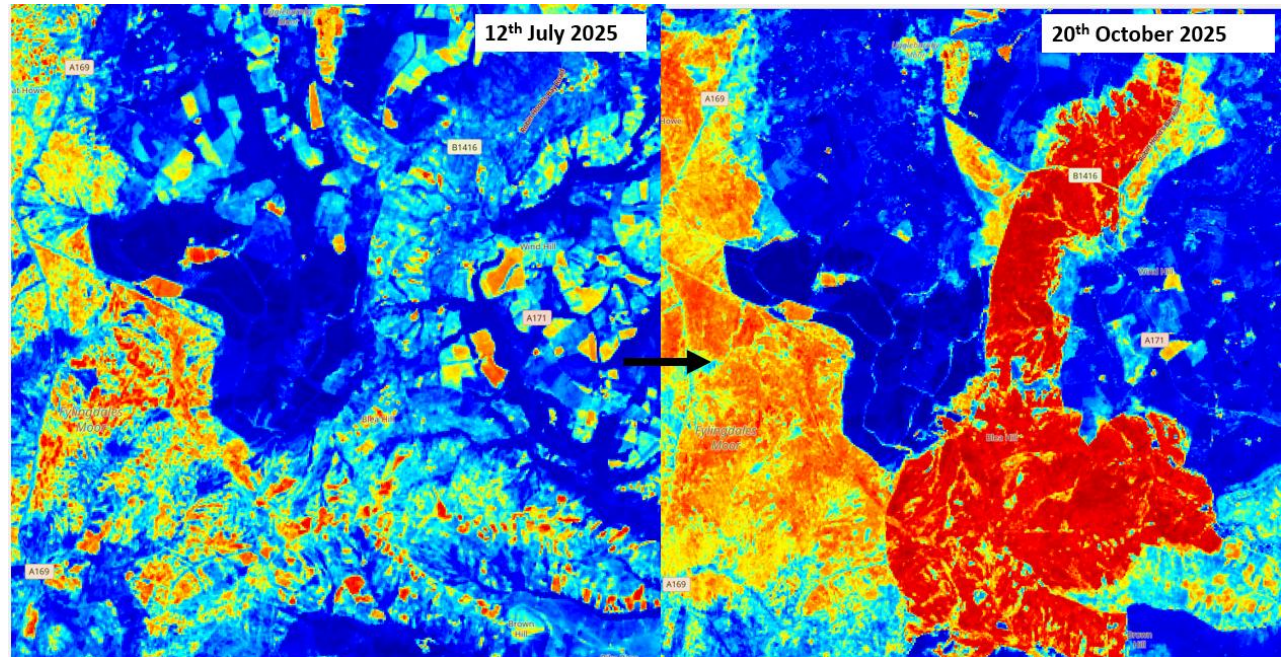
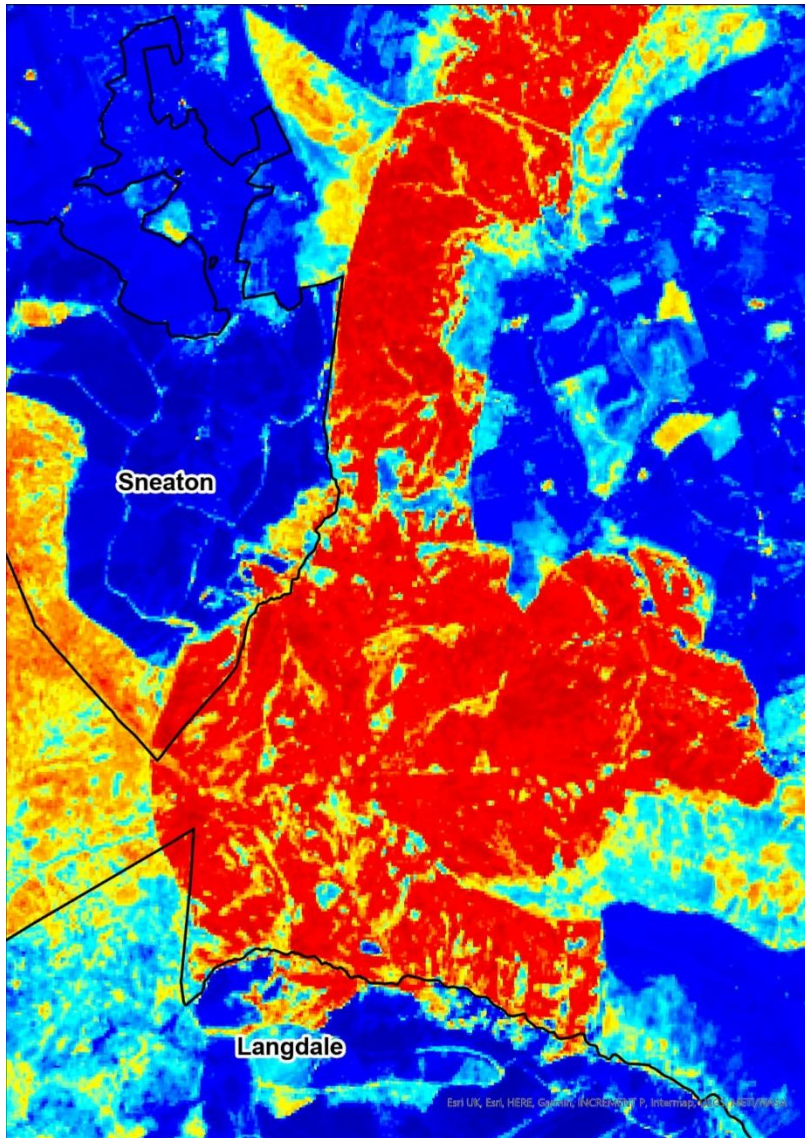




Declared national major incident on 13th August



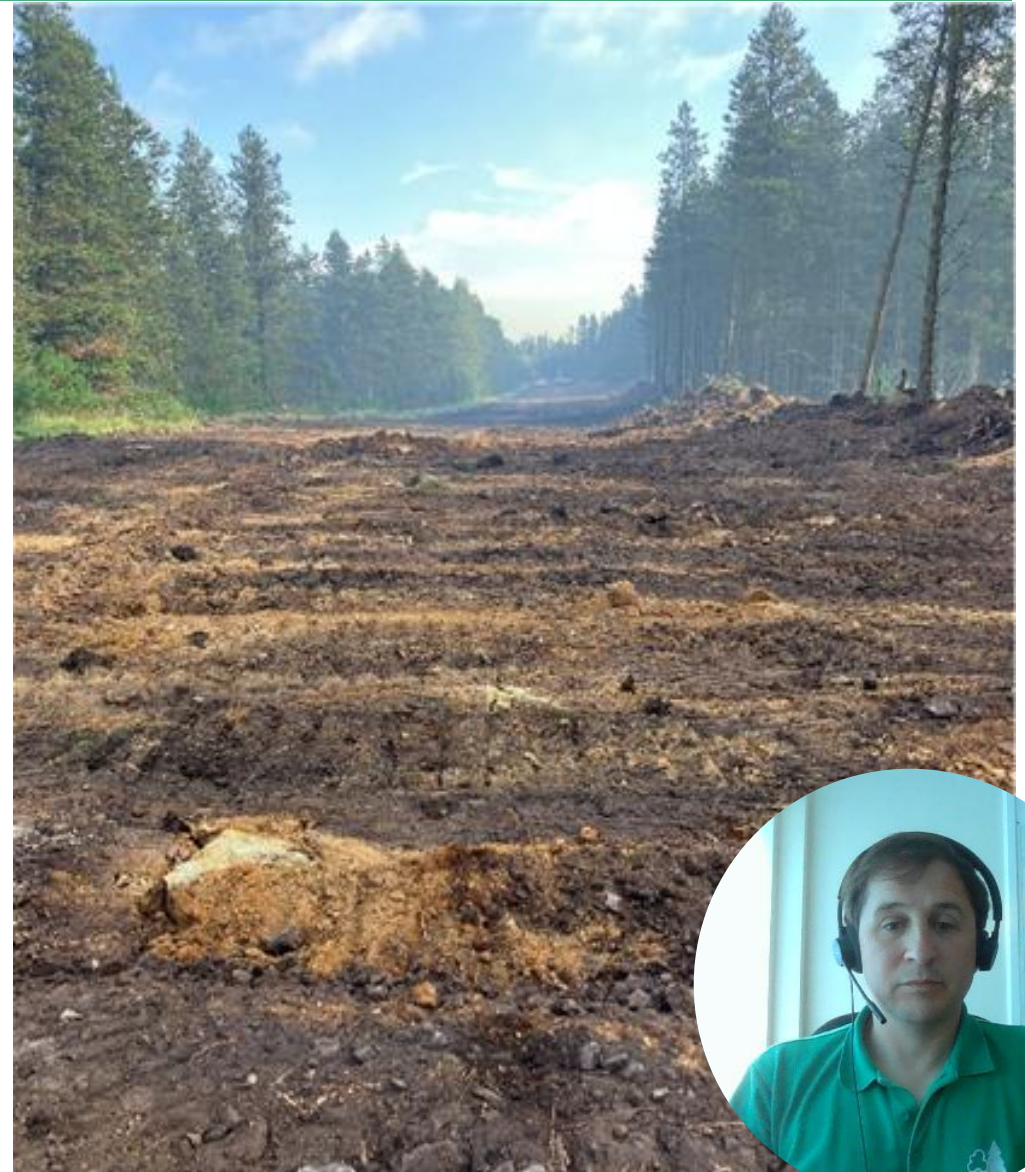




Produced by Tom André.



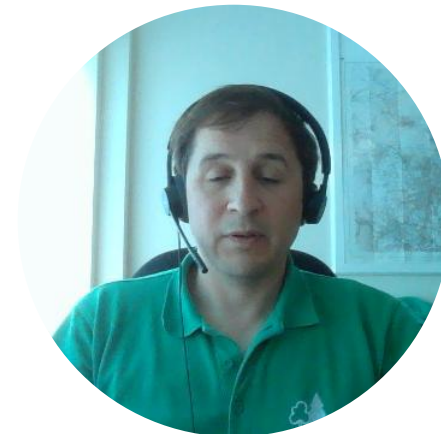




27km of fire breaks installed
Over 1200 staff hours
Forestry England costs
Response: ~£258,000
Recovery: >£500,000



- Large Regional Emergency Plan
- One page wildlife emergency response guide
- 24/7 Duty Officer system
- Extensive written guidance on incident management and contingency planning
- Some staff trained in incident management teams
- Organisational lead on Wildfire and Incident Management.



Control of wildlife sites is handed over to the Fire and Rescue Service.

CROW closure

PRoW closure





Impacts

Public entering dangerous areas

Impeded firefighting operations

Time-consuming managing people trying to access the fire

Staff verbally abused

Misinformation spread on social media



Site cordon difficult to enforce.

Some people will ignore comms and signs asking them to stay away.

Slow closure of public access on land outside of Forestry England's control.

People have been slow to return to the landscape when it was reopened.



- Site cordon needs to be enforced by an appropriate agency, which is sufficiently resourced and empowered to do so.
- Closure of Public access needs to happen collaboratively and quickly.
- Work in partnership to change public behaviours.
- Work in partnership to proactively promote when landscapes are re-open.



- Staff learn from simulations, don't rely on written guidance for training.
- Make sure you have wildfire PPE in stock.
- Have tools to communicate in remote sites
- Don't assume fires can be extinguished.
- Senior staff need to actively manage staff safety and wellbeing.
- Proactively build relationships with Fire Service and Local Resilience



- Economic viability
- Operational viability
- Cultural viability



No action is not an option

Projected wildfire risk days per year in the UK for 2060-2080 future period, based on Reading University research.

